



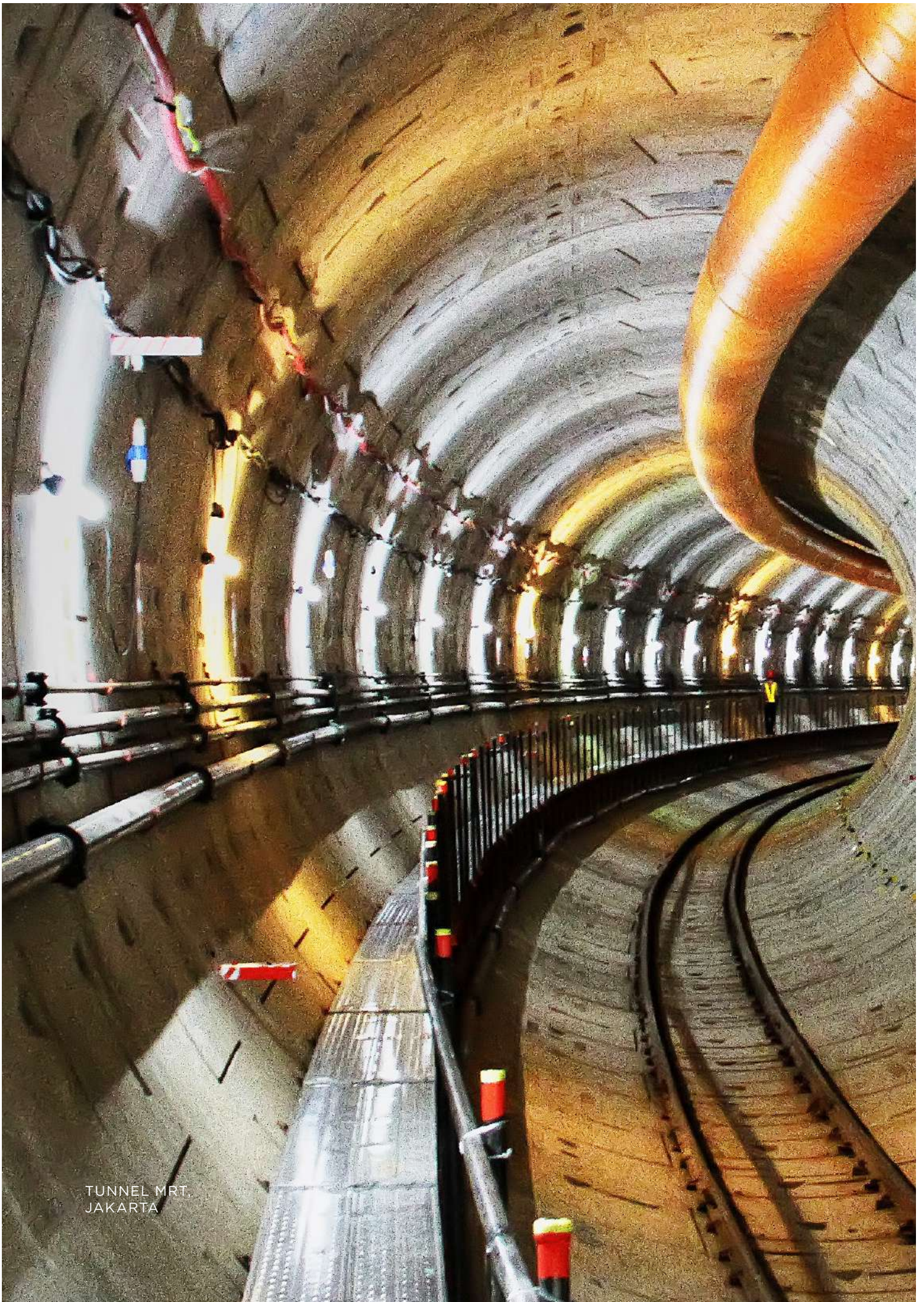
PT WIJAYA KARYA (Persero) Tbk



www.wika.co.id

BUILDING A BETTER QUALITY OF LIFE





TUNNEL MRT.
JAKARTA

TABLE OF CONTENT

02	History of WIKA
04	Awards
06	Message from the President Director
08	Vision, Mission & WIKA's Value
10	Commissioners Profile
12	Directors Profile
14	Organizational Structure
18	Business Portfolio

19	Business Lines
20	Business Flow
22	Operation Area
26	Financial Highlights
30	Human Capital
34	WIKA's Portfolio
50	Corporate Social Responsibility

HISTORY OF WIKA



PT WIJAYA KARYA (PERSERO) TBK , (HEREINAFTER REFERRED TO AS WIKA OR COMPANY) WAS ESTABLISHED BY VIRTUE OF LAW NO. 19 OF 1960 IN CONJUNCTION WITH GOVERNMENT REGULATION NO. 64 OF 1961 DATED 29 MARCH 1961 CONCERNING THE ESTABLISHMENT OF THE STATE COMPANY “WIJAYA KARYA”.

WIKA began as a company engaging in electrical and plumbing installation work, and in the 70s, shifted into becoming a civil and building contractor company.

Through Initial Public Offering (IPO) in the Indonesia Stock Exchange on 27 October 2007, WIKA released 28.46 percent of its shares to the public, while the Government of the Republic of Indonesia owns the rest. The funds received from the IPO has helped WIKA to be more flexible in its growth and development.

The Company continues to take various anticipative and innovative measures to help its development, resulting in its strong position amidst national and global crisis

In 2019, WIKA officially launched its 2030 Vision and Mission to enable the Company in overcoming future challenges as a company engaging in sustainable investment and Engineering,

Procurement, and Construction (EPC) for better quality of life. WIKA believe, its 2030 Vision is an actualization and harmonization of its principles (people, planet, and profit) while still in line with the objective of sustainable development. WIKA is committed to play its vital role in creating a better quality of life.



AWARDS 2021



Rekor Museum Rekor Dunia Indonesia (MURI):
BUMN Pertama Penyelenggara Kompetisi BIM Tingkat Nasional di Indonesia melalui Program BIMWIKA Awards



Indonesia Top Companies Awards 2021: Sektor Building Constructions



Human Capital on Resilience Excellence Awards 2021

- The Best Recruitment #4Stars
- The Best Leader's in HC: Direktur Human Capital dan Pengembangan, Mursyid
- The Best CEO Focus on HC: Direktur Utama, Agung Budi Waskito



Bronze Stevie Awards - The 2021 Asia-Pacific Stevie Awards
Kategori Innovation in Technology Management Planning & Implementation



Indonesia Sustainable Development Goals (SDGs) Award (ISDA) 2021

- **Gold Category:** Cepat Tanggap Hadapi Pandemi Covid-19 dan Penyesuaian Kebiasaan Baru (New Normal)
- **Silver Category:** Ruang Terbuka Hijau (RTH) Terpadu di Lingkungan Area Bisnis WIKA



Top GRC Awards 2021

- TOP GRC 2020 #4 Stars
- The most committed GRC Leader 2021: Direktur Utama, Agung Budi Waskito



TJSL dan CSR Awards 2021 dan Indonesia Shared Value Institute (ISVI)

- Kategori Pilar Sosial BUMN Tbk
- Kategori Pilar Ekonomi BUMN Tbk



ESG Disclosure Award 2021
- Leadership BB: PT Wijaya Karya (Persero) Tbk.



Asia Sustainability Reporting Rating (ASSRAT) 2021
- Gold Rank



Corporate Governance Perception Index (CGPI)

Indonesia Most Trusted Companies Award 2021 Predikat "Sangat Terpercaya"



Marketeer of The Year Award
- Agung Budi Waskito as Industry Marketing Champion 2021 Construction



PR Indonesia Award 2021
- Agung Budi Waskito as The Most Popular Leader in Social Media 2021



Top CSR Award 2021
- Bintang 5 Top CSR Awards #2021



TOP Digital Awards 2021
"Accelerating Digital
Transformation in Business &
Government"
- TOP Digital Implementation
2021 #Stars 5



**Anugerah BUMN 2021 "Strategi dan
Transformasi di Masa Pandemi"**
WIKI
- Pengembangan Talenta Unggul
Terbaik I
- CEO Driving Execution Terbaik
- Special Appreciation Distinctive
Competency Development



**Bisnis Indonesia Corporate Social
Responsibility Award (BISRA) 2021**
- Gold Champion in Corporate Re-
sponsibility Program



Corporate Branding PR Award 2021
in: Konstruksi



**The 12th IICD Corporate Governance
Award 2021:**
- Best State Owned Enterprise
(BUMN) Terbaik
- Top 50 Big Capitalization Public
Listed Company



**Apresiasi Untuk Prestasi 2021
Majalah Listrik Indonesia**
- WIKI: Keunggulan di Bidang EPC
Pembangkit Listrik



Indonesia Public Relation Award 2021
Kategori Properti dan Konstruksi



Indonesia GCG Award-VI-2021
- WIKI: 1st The Best Kategori Public
Company - Building Construction -
SOE Listed

- WIKI Beton: 1st Best Kategori
Building & Construction for Public
Company

- WIKI Gedung: 1st Best Kategori
Building & Construction - SOE &
Subsidiaries Listed Company



**Iconomics CSR Brand Equity Award
2021**
**CSR Brand Equity Award - Gold
Award**



**Indonesia Corporate Secretary &
Communication Award VI 2021**
1st The Best Informative Website
Sector Infrastructures - Heavy Con-
struction & Civil Engineering



**Anugerah Humas Indonesia (AHI)
2021**
- Pemimpin BUMN Tbk:
Direktur Utama, Agung Budi Waskito
- BUMN Tbk Terpopuler di Media
Digital 2021



**Apresiasi Partisipasi Aktif dalam
Kegiatan Kerja Sama dengan UMKM
dan Mendorong Pemberdayaan
Ekonomi Lokal di Daerah**



**HERSTORY Indonesia Best Workplace
for Women Awards 2021 kategori
infrastructure building**

MESSAGE FROM THE PRESIDENT DIRECTOR

RESPECTED SHAREHOLDERS AND STAKEHOLDERS,

On behalf of the Board of Directors and management of PT WIJAYA KARYA (Persero) TBK (WIKA), it is my honor to extend our greetings with WIKA's new optimistic spirit.

Sustainable development, which has become global discourse in the last few decades, demands all construction industry players, including WIKA to adapt with the business and environmental atmosphere. Every aspect requires friendlier approaches, from technological, implementation techniques, product, to the end process.

These aspects have become the foundation for WIKA to implement sustainable transformation of its vision-mission. The vision-mission is the mix and match of green construction concept, continuous improvement, and business ethics, aiming to meet the challenges in sustainable development.

WIKA 2030 vision and mission transformation demonstrates that WIKA's objective is not solely to create the best products and/or services. Beyond that, the existence, role, and function of WIKA is aimed to create a more vast benefit, which is to improve the quality of life for everyone for a more united nation.

So, how can WIKA continue to move consistently and continuously? This is an interesting question and a challenge to contemplate. Is it enough to solely rely on the existing organizational strategy and system? Or do we have to rely solely on Human Capital? The answer is quite straightforward, everything has to correlate and collaborate!

The message I wish to convey is that WIKA reflects The Power of Team Strategy. WIKA is not a "super" organization, but WIKA is an expert in building a "super team". It is safe to say that WIKA is truly a solid super team because WIKA is able to create synergy among its people, business pillars, as well as its development strategy and execution.

I am optimistic that WIKA, as a part of Indonesia, has a competitive edge that is on par with other nations in the global competition scene.

We are a nation of extraordinary diversity and local cultural heritage. We are all able, we are all willing, we are all aware that WIKA and Indonesia possess world-class quality. A quality to create a better life for everyone.

Regards,

Agung Budi Waskito

President Director
PT WIJAYA KARYA (Persero) Tbk.

“I AM OPTIMISTIC THAT WIKA, AS A PART OF INDONESIA, HAS A COMPETITIVE EDGE THAT IS ON PAR WITH OTHER NATIONS IN THE GLOBAL COMPETITION SCENE.”



AGUNG BUDI WASKITO

President Director
PT WIJAYA KARYA (Persero) Tbk.

VISION MISSION

Leader in sustainable investments and EPC for better quality of life.

- Deliver integrated & sustainable EPC services and products based on excellent Quality, Safety, Health & Environment principles
- Ensure sustainable growth through smart investment portfolio
- Provide integrated area development for a better living to society
- Provide collaborative services beyond stakeholders' expectations
- Establish footprints worldwide through innovative and advanced technology
- Implement learning & innovation culture in order to intensify global competencies
- Enhance local value over leadership practices to build holistic well-being

AKHLAK CORE VALUE



ABOUT AKHLAK

AKHLAK core value is implemented by the Ministry BUMN (Indonesian state owned enterprises) in serving the country.

AKHLAK itself has stands for Amanah, Competent, Harmonious, Loyal, Adaptive, and Collaborative. Each value has its own description for the application of the code of ethics and code of conduct to be applied at the Ministry of BUMN (Indonesian state owned enterprises).



BOARD OF COMMISSIONERS



Jarot Widyoko

President Commissioner

Jarot Widyoko took his Bachelor's degree at Gadjah Mada University majoring in Civil Engineering in 1987 and earned his Masters in Water Resources Development at the Bandung Institute of Technology in 1993.

Previously, he was entrusted as Director General of Water Resources of the Ministry of PUPR, Director of River and Coast Directorate General of Water Resources of the Ministry of PUPR, and Head of the Ciliwung Cisadane River Major, Directorate General of Resources Water Power Ministry of PUPR.



Suryo Hapsoro Tri Utomo

Independent Commissioner

Active lecturer in Engineering Faculty for Master Degree and Magister in University of Gadjah Mada since 1996.



Firdaus Ali

Commissioner

Trusted as the Special Staff of the Minister of PUPR in the field of Water Resources and Senior Lecturer and Researcher at the Department of Civil and Environmental Engineering at the Faculty of Engineering, University of Indonesia.



Adityawarman

Independent Commissioner

Previously, he was trusted as Commissioner of PT Hutama Karya (Persero) in 2016-2020, President Director of PT Jasa Marga (Persero) Tbk. in 2012-2016, as well as the Director of Operations of PT Jasa Marga (Persero) Tbk. in 2008-2012.



Harris Arthur Hedar

Independent Commissioner

Currently, he is also trusted as Lion Air Group's Head of Corporate Lawyer since 2006 until now, Advocate at the Office of Advocate Dr. Harris Arthur Hedar SH, MG and Partners.



Satya Bhakti Parikesit

Commissioner

Serves as Deputy for Economic Affairs, Cabinet Secretariat. As he started his career as a Junior Lawyer at a Legal Consultant Bureau, then joined the Cabinet Secretariat since 1997



Rusmanto

Independent Commissioner

Serves as Expert Staff Ministry of Defence Republic of Indonesia, previously was also trusted as Special Staff TNI AD Republic of Indonesia.

BOARD OF DIRECTORS



Agung Budi Waskito

President Director

Has been in the world of construction for more than 20 years. Agung is known as big dam expert and is also active in Indonesian National Committee for Large Dams. His high dedication to the development of homeland infrastructure has made Agung get international recognition in the form of the ASEAN Outstanding Engineering Achievement 2019.

Appointed as President Director of WKA at the AGMS of the 2019 Financial Year on June 8, 2020 after 2 years served as Director of Operations I.



Hananto Aji

Director of Operation I

Previously he served as General Manager of the WKA Business Synergy. Appointed as Director of Operation I through the Annual General Meeting of Shareholders (AGM) on June 8, 2020.



Adityo Kusumo

Director of Finance & Risk Management

Previously he served as Executive Assistant to Deputy Minister of SOE II. Appointed as Director of Finance and Risk Management through Extraordinary General Meeting of Shareholders on February 4, 2022.



Harum Akhmad Zuhdi

Director of Operation II

Previously he was trusted as WIKA General Manager in Powerplant & Energy Department. Appointed as Director of Operation II through the Annual General Meeting of Shareholders (AGM) on June 8, 2020.



Rudy Hartono

Director of Operation III

Previously he was Director of Quality, Health, Safety and Environment of PT WIJAYA KARYA (Persero) Tbk, and Appointed as the Director of Operation III by the Extraordinary General Meeting of Shareholders on September 2, 2021.



Ayu Widya Kiswari

Director of Quality, Health, Safety and Environment

Previously she was the President Director of PT Cinere Serpong Jaya (one of entity association of PT Jasa Marga (Persero) Tbk) from 2019. Appointed as Director of QHSE by the Extraordinary General Meeting of Shareholders on September 2, 2021.

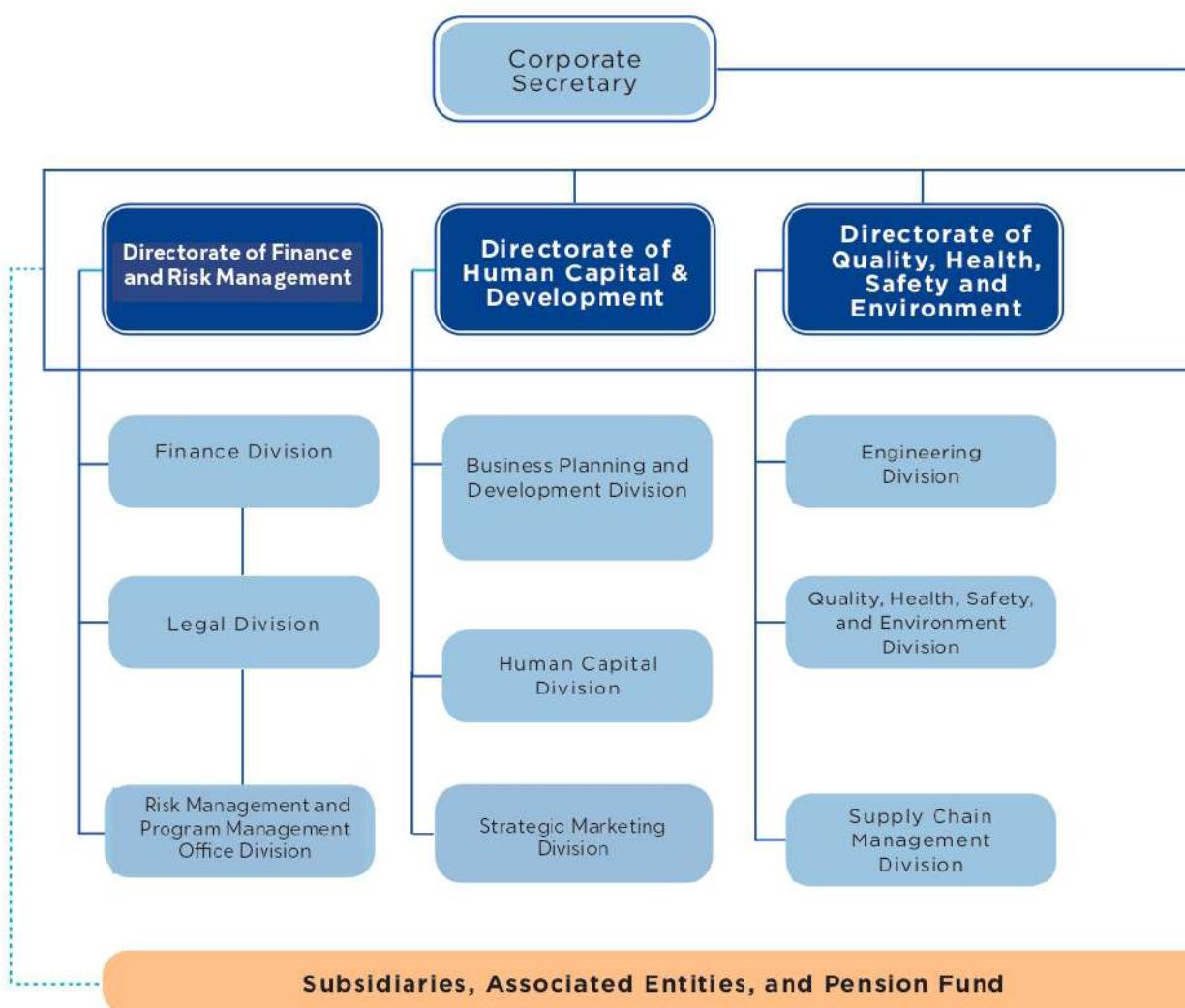


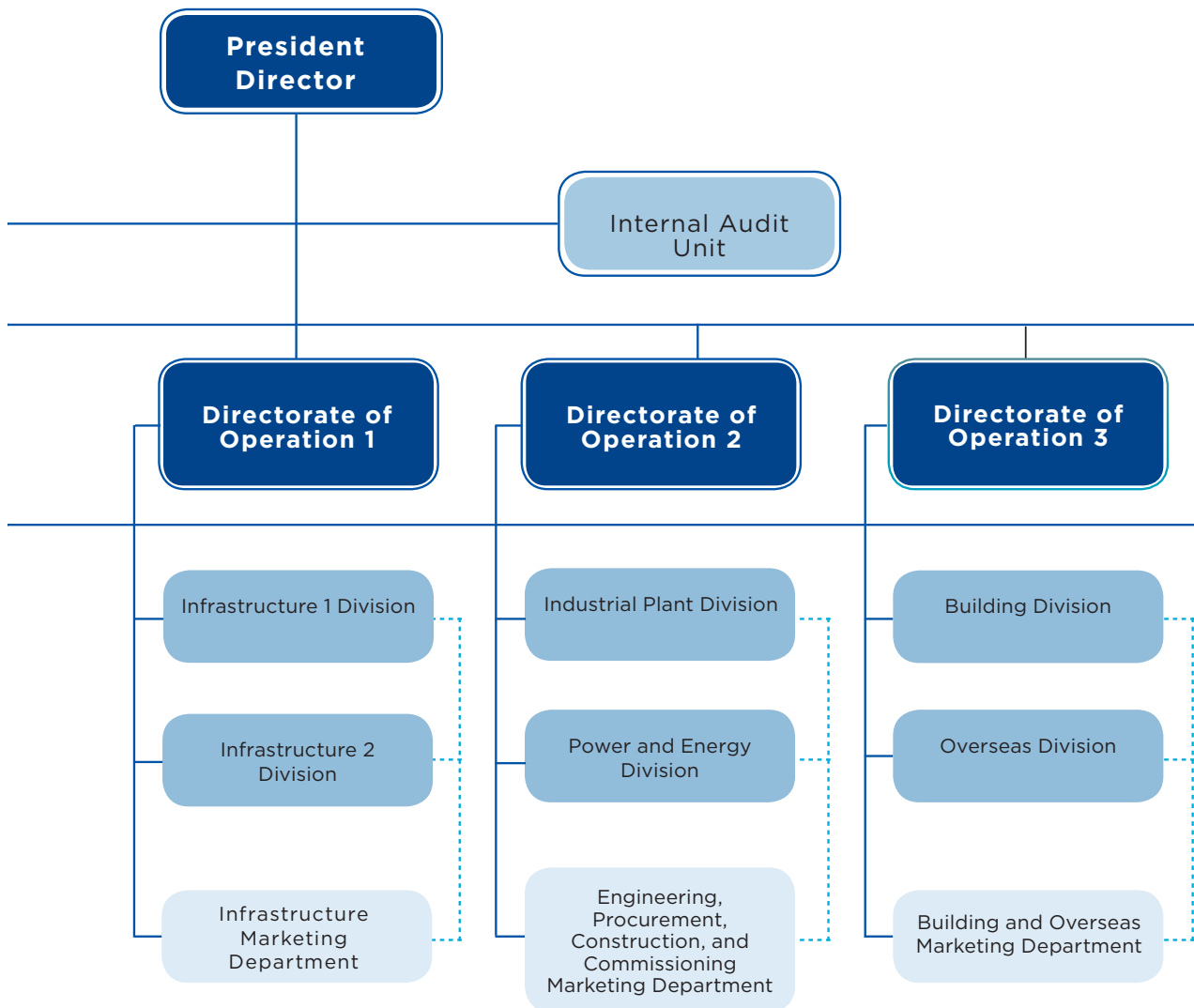
Hadjar Seti Adji

Director of Human and Development

Previously, he served as the Director of Human Resources and System Development of PT Waskita Karya (Persero) in 2018 - 2022. He officially served as Director of Human Capital and Development of PT Wijaya Karya (Persero) Tbk based on the resolution of the Extraordinary General Meeting of Shareholders on August 5, 2022.

ORGANIZATIONAL STRUCTURE





Subsidiaries, Associated Entities and Pension Fund

WIKI'S BUSINESS





KETAPANG ELECTRIC
STEAM POWER PLANT,
WEST KALIMANTAN

BUSINESS PORTFOLIO

REPUBLIC OF INDONESIA

65,05%

PUBLIC

34,95%



TRANSPORTATIONS INFRA

JASAMARGA MAYAPO SITUNG 20%	JASAMARGA 18,29%
JASAMARGA BAKI TOL Highway Corporation 0,40%	PP 25%
Airport 19%	Railway 38%

ENERGY

JABAR POWER 20,22%	TPPI 0,11%
KCIC 60%	

WATER & ENVIRONMENT

ami 14%	
---------	--

— Subsidiaries
 Investment in Associates
 * WIKA own 10% exclude from 60%
 ** WIKA own 40% excue from 60%
 *** WEGA own 10% exclude from 30%
 *** WEGA own 49% exclude from 51%

BUSINESS LINES

WIKA's business activities are focused on optimizing 5 (five) business lines. With product diversification offered by each business line, WIKA excels in being able to seize every opportunity in the market



OPERATION AREA





Wilayah-wilayah Jaringan Bisnis dan Operasional WIKA di 2021 | WIKA's Business Network and Operational Areas in 2021

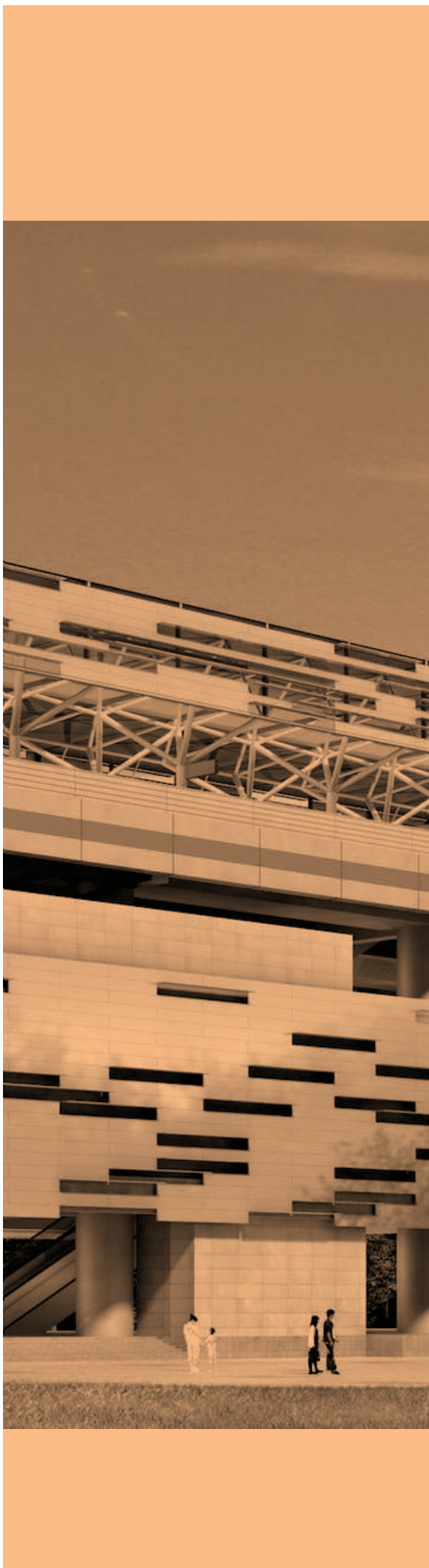
Dalam Negeri Domestic			
1	Sumatera Utara North Sumatra	11	Sulawesi Tengah Central Sulawesi
2	Sumatera Selatan South Sumatra	12	Sulawesi Tenggara Southeast Sulawesi
3	Bangka Belitung	13	NTT
4	Kalimantan Barat West Kalimantan	14	Papua
5	Kalimantan Selatan South Kalimantan	15	Jawa Timur East Java
6	Kalimantan Timur East Kalimantan	16	Jawa Tengah Central Java
7	Riau	17	Jawa Barat West Java
8	Kalimantan Tengah Central Kalimantan	18	Banten
9	Sulawesi Utara North Sulawesi	19	DIY Yogyakarta
10	Sulawesi Selatan South Sulawesi	20	DKI Jakarta
		21	NTB

Luar Negeri Overseas			
1	Aljazair Algeria	6	Niger
2	Uni Emirat Arab United Arab Emirates	7	Taiwan
3	Malaysia	8	Kepulauan Salomon Soloman Islands
4	Filipina	9	Arab Saudi Saudi Arabia
5	Timor Leste		

SANYING LINE MRT SYSTEM,
TAIWAN



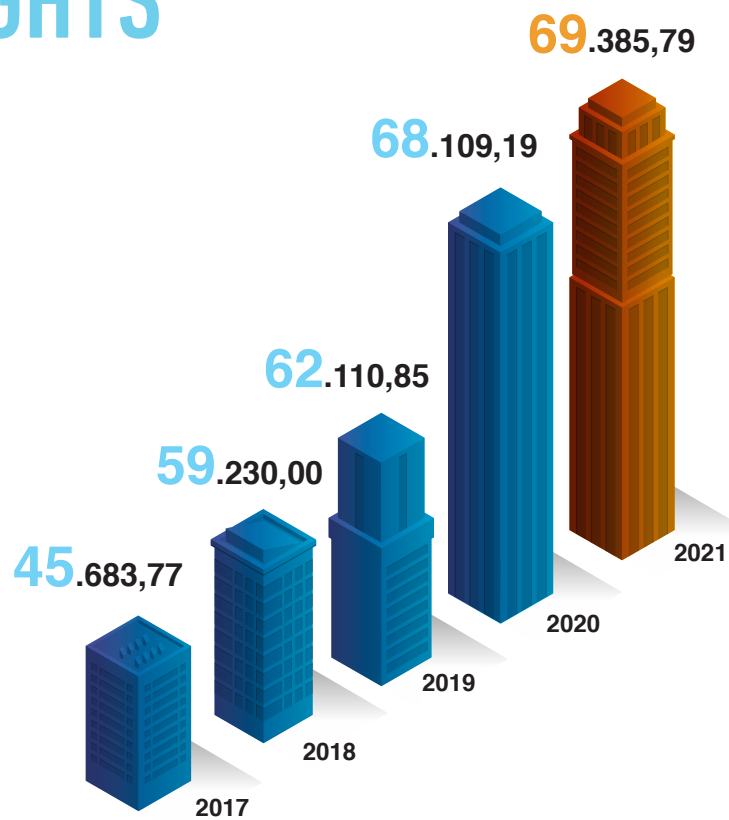
FINANCIAL HIGHLIGHTS



FINANCIAL HIGHLIGHTS

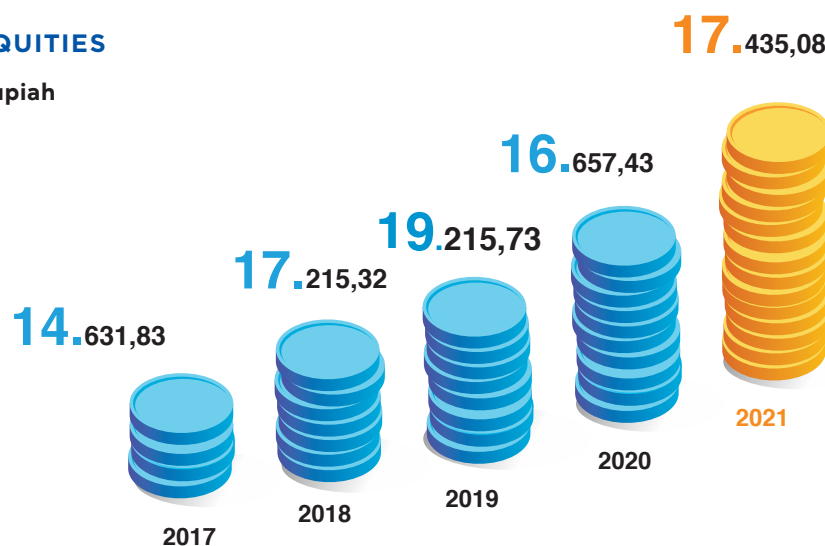
TOTAL ASSET

In billion Rupiah



TOTAL EQUITIES

In billion Rupiah

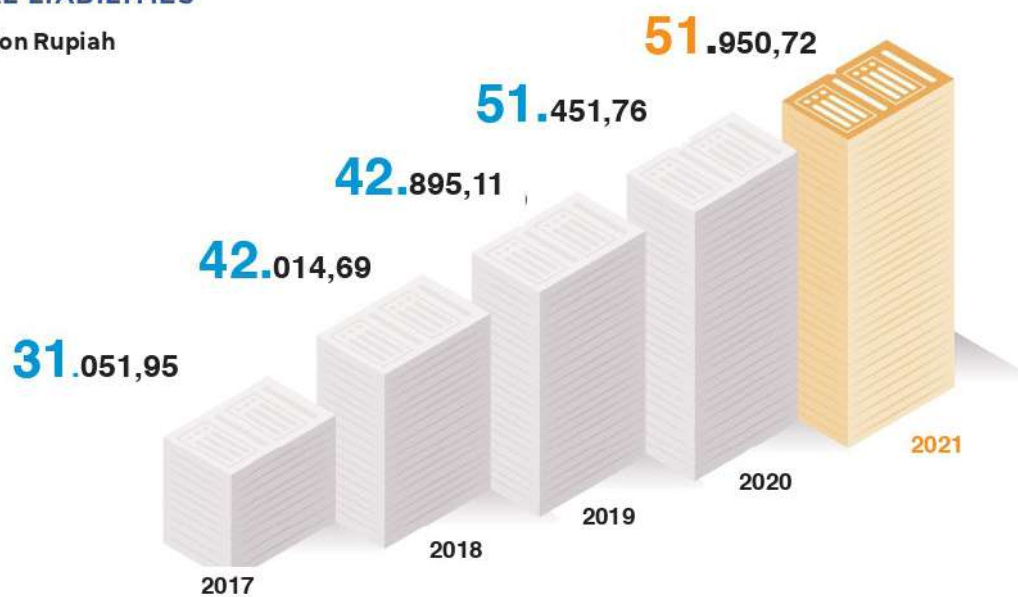


NEW CONTRACT ACHIEVEMENT 2021

Rp 26,81 Trillion

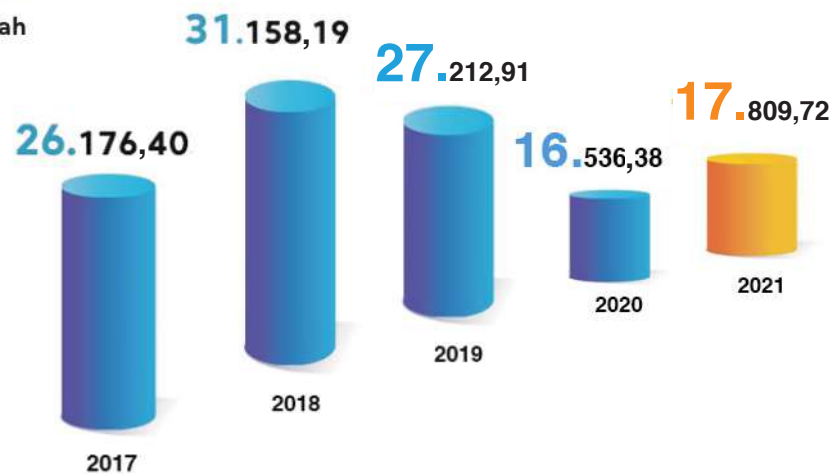
TOTAL LIABILITIES

In billion Rupiah



REVENUE

In billion Rupiah



HUMAN CAPITAL





HUMAN CAPITAL

Rentang Usia Age	2021			2020		
	Pria Male	Wanita Female	Total	Pria Male	Wanita Female	Total
51-60 tahun 51-60 years old	362	19	381	339	16	355
41-50 tahun 51-60 years old	505	36	541	528	34	562
31-40 tahun 31-40 years old	973	106	1.079	900	99	999
21-30 tahun 21-30 years old	639	95	734	799	119	918
Jumlah Total	2.479	256	2.735	2.566	268	2.834

Human Resources is the main capital for WIKA's business sustainability and transformation. Since their first day of employment, WIKA employee is shaped to be an adaptable and persistent individual, who is willing to learn continuously. Character building is in line with self-competence and leadership development

This combination creates first-class WIKA personnel who can be trusted to fill top positions in WIKA, as well as other SOEs.

WIKAPRATAMA

Wikapratama Learning Center is a competency development facility for WIKA personnel (Pusat Pengembangan Kualitas Insani WIKA/PPKIWI). Various training programs are organized to prepare the young generation of WIKA to take structural and functional positions.



WIKASATRIAN

Our observation shows that existing leadership practices have not fully answered the fundamental problems in this country. Through our extensive research, we found a leadership model – a Nusantara heritage that is the identity of this nation: Wikasatrian.

Based on local cultural heritage, which are spirituality/belief in the Almighty God, humanity, and nature, Wikasatrian learning program is designed to create

more effective leaders who contribute and explore noble values, which are proven in the legacy they leave behind, and therefore, Wikasatrian can serve as a guideline for Indonesian leadership model.

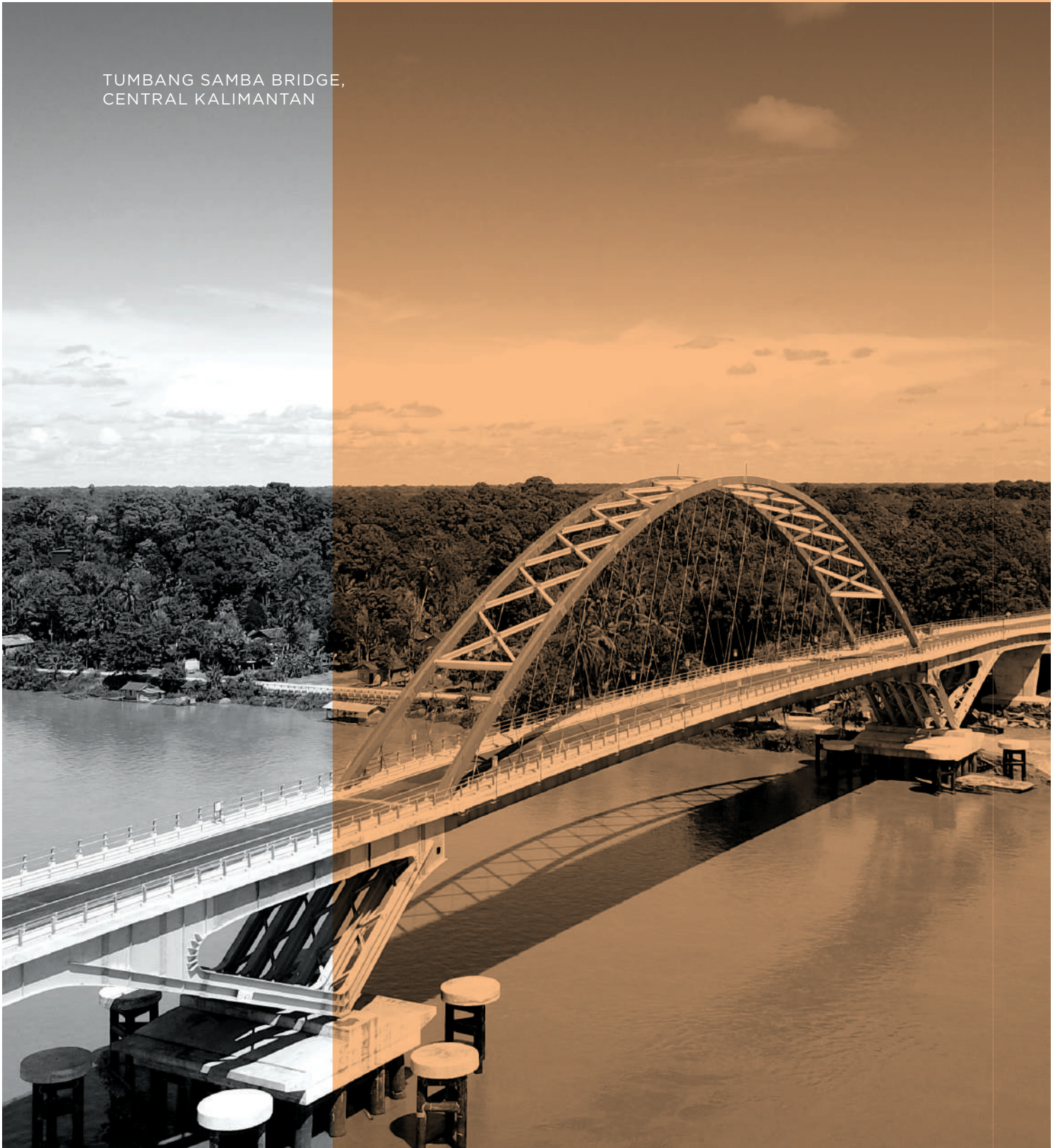
Wikasatrian leadership modules focus on personal mastery, which is divided into three levels (Satria Pratama, Satria Utama, and Satria Luhur), as well as business mastery through a series of

learning activities that create added values for the Company.

As WIKA leadership center, Wikasatrian is hoped to generate more benefits for public in general, and be the starting point for the rise of Nusantara leadership concept.



TUMBANG SAMBA BRIDGE,
CENTRAL KALIMANTAN



WIKI'S PORTFOLIOS





SERANG-PANIMBANG TOLL ROAD



BANDARA HANG NADIM, BATAM



INVESTMENT

BECOMING THE DIRECTION IN THE COMPANY'S BUSINESS TRANSFORMATION

Supported by strength of synergy in the construction and industry sectors, the Investment business line is a promising flow of income to support WIKA's growth. Investment is also becoming the direction of the Company's business transformation in the future.

As an investor, WIKA plays a direct role in providing capital for projects with direct impact to economic growth, from absorbing workforce for construction to even more benefits after operations. WIKA's portfolio in the investment business line currently includes toll roads, ports, railroads, energy and electricity, as well as water treatment.





REALTY & PROPERTY

REALTY AND PROPERTY SECTOR REPRESENTS THE COMPANY'S DREAM TO OFFER AN IDEAL PROPERTY FOR VARIOUS MARKET SEGMENTS

Representing WIKA's dream to offer ideal property for various market segments, the Realty and Property business line is a mainstay in welcoming this vast potential in developing new cities and supporting the Government's programs to meet residential needs of the public.

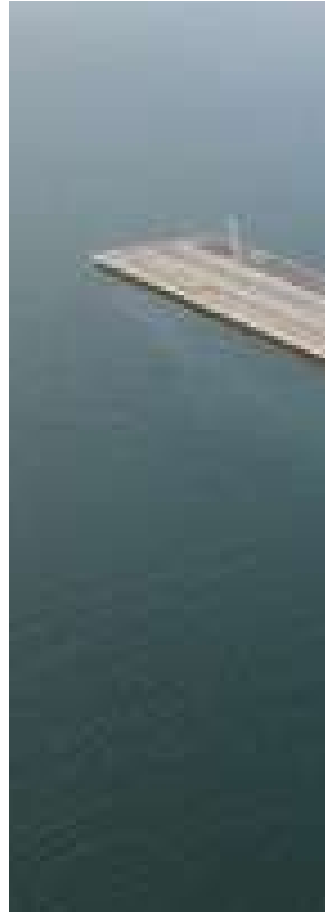
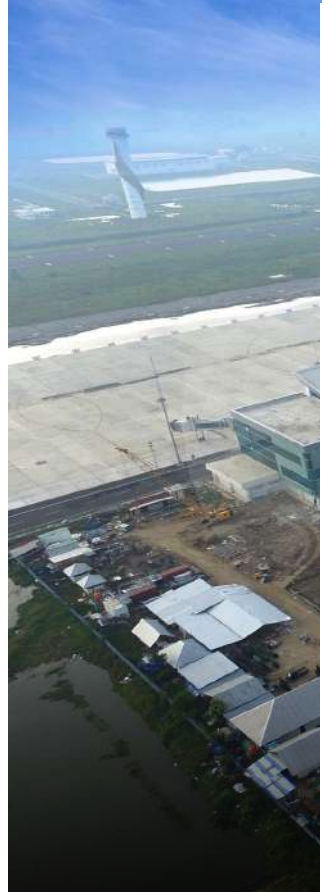
The Tamansari brand by WIKA is now widely known for its property products in the form of landed houses and high-rise buildings in major cities in Indonesia.

INFRASTRUCTURE & BUILDING

WIKI'S MAIN BUSINESS LINE

Always in the frontline in presenting higher quality of life, WIKI's Infrastructure & Building business line has been the Company's main strength for more than 6 (six) decades. WIKI is trusted to manage various strategic projects in the country, including 37 reservoirs that are built to create food sustainability, as well as 589 kilometers of toll roads, 14 airports, and 32 ports and harbors to support the improvement of connectivity.

Aside from opening access from villages to cities with the construction of Trans-Papua, WIKI also participates in transforming the face of Indonesia's transport by becoming the pioneer in constructing the railroad infrastructure, comprising of the Mass Rapid Transit (MRT), Light Rail Transit (LRT), High Speed Railway (HSR), and Automated People Mover System (APMS).





KERTAJATI AIRPORT,
WEST JAVA



TERMINAL KIJING,
KALIMANTAN BARAT



MUARA KARANG GAS AND STEAM POWER PLANT,
JAKARTA



MATINDOK GAS DEVELOPMENT FACILITY,
CENTRAL SULAWESI



ENERGY & INDUSTRIAL PLANT

DEVELOPMENT IN ENERGY AND INDUSTRY PLANT BUSINESS LINE BECOMES A STRATEGIC STEP

WIKA's strategic step in showcasing its capacity as a leading Engineering, Procurement, Construction, and Commissioning (EPCC) company is manifested with the development of the Energy & Industrial Plant business line.

In addition to the 14,750MW-capacity power plant, WIKA's creations in this business line include several projects in the energy, mining, oil and gas sector, as well food processing plant that focuses on meeting the basic needs of the people of Indonesia.

INDUSTRY

ONE OF WIKA'S KEY TO SUCCESS AS A CONTRACTOR

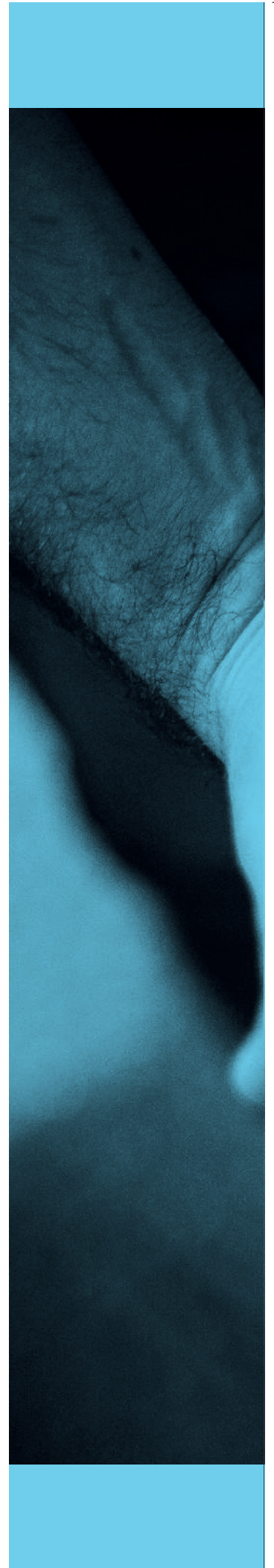
As one of WIKA's key to success, the industry business line is operated by its subsidiaries by offering product diversification and integrating it with project requirements of WIKA or other contractors. Product superiority and efficiency in time, cost, and quality generated by this business line creates an added value for WIKA, and helps it gain trust from all parties.

The Industry business line's mainstay products include precast concrete by WIKA Beton with installed capacity of 4.05 million tons per year; and steel fabrication, aluminum casting and plastic injection from WIKA Industry & Construction with the production capacity of 137,500 tons per year; as well as exploration and processing of natural asphalt of WIKA Bitumen with the production capacity of 350,000 tons per year.





CORPORATE SOCIAL RESPONSIBILITY





CORPORATE SOCIAL RESPONSIBILITY

AS THE LARGEST EPC AND INVESTMENT COMPANY IN INDONESIA, WIKA CONTINUOUSLY OFFERS THE BEST QUALITY OF ITS PRODUCTS AND SERVICES.

As the largest EPC and investment company in Indonesia, WIKA continuously offers the best quality of its products and services.

To maintain synergy of human capital, nature, and community that supports the Company's sustainability, WIKA directly takes on the responsibility to create better quality of life by contributing through infrastructure development, investment, and EPC all over Indonesia.

The Company also continues to improve its capabilities by basing its operations on the principles of Prosperity, People, Planet, Peace, and Partnership (5P), while maintaining the commitment to prioritize quality, responsibility, and sustainability.

To achieve this, WIKA actualizes it with the following 4 (four) CSR activities: WIKA Sehat, WIKA Hijau, WIKA Peduli, and WIKA Pintar that are continually developed to bring great benefits for the general public.

WIKA SEHAT

In accordance with the triple bottom line principles (People, Planet, and Profit), WIKA sincerely, properly, and fittingly exercises the Company's values to optimize local noble values and qualities to extend its reach and compete globally.



WIKA HIJAU

As a dynamic, moving, swift, and dependable Company, WIKA is committed to life and sustainable environment preservation.

WIKA BELIEVES THAT TO CREATE BETTER QUALITY OF LIFE, SUPPORT IS NEEDED NOT ONLY ECONOMICALLY, BUT ALSO IN GOOD COOPERATION, PEACE, QUALITY COMMUNITY, AND WELL-PRESERVED ENVIRONMENT

WIKA PEDULI

With a noble determination, optimism, and resilience while adhering to its principles, WIKA endeavors to maintain harmony, both among WIKA personnel, as well as between WIKA and community, environment, shareholders, and stakeholders



WIKA PINTAR

Our business is not only profit-oriented, but with our Corporate Social Responsibility, we participate in the development of the Company's social environment. Therefore, the focus of WIKA's sustainable CSR is always optimizing innovation and breakthrough as part of its core business.

COMPANY'S ADDRESS

HEAD OFFICE

PT WIJAYA KARYA (Persero) Tbk.

Jl. D.I. Panjaitan Kav. 9-10
WIKA Tower 1&2, Jakarta 13340
Phone : (+6221) 8067 9200
Fax : (+6221) 2289 3830
Website: www.wika.co.id
E-mail : adwijaya@wika.co.id

REPRESENTATIVE OFFICE

Operation I
Aceh, North Sumatra, Riau, Kep. Riau, West Sumatra, Jambi, Bengkulu & Bangka Belitung Islands
Jl Gunung Krakatau No. 15
Medan 20239
Phone : (+6261) 6639 496

Operation II
DKI Jakarta, Bogor, Depok, Tangerang, Bekasi & Batam
WIKA Tower 2, 9th Floor
Jl. D.I. Pandjaitan Kav. 10
Jakarta 13340
Phone : [+6221] 8192 806

Operation III
South Sumatra, Lampung, Banten & Central Java
WIKA Tower 2, 10th Floor
Jl. D.I. Pandjaitan Kav. 10
Jakarta 13340
Phone : (+6221) 8192 808

Operation IV
Yogyakarta, Central Java, East Java & Bali
Best Western Papilio Hotel 6th Floor
Jl. Ahmad Yani No. 176-178, Gayungan
Surabaya, East Java 60235
Phone : [+6231] 9900 3189

Operation V
Kalimantan
Jl. Letkol. Pol. H. M. Asnawi Arbain No. 115-116, Balikpapan
East Kalimantan 76115
Phone : (+62542) 8510 888
Email : wikakalimantan@wika.co.id

Operation VI Sulawesi & Maluku

Jl. Pajonga Dg. Ngalle No. 12
Makassar, South Sulawesi 90125

Operation VII NTT, NTB, Papua & West Papua

Jl. Majapahit No. 104
Dasan Agung Baru, Selaparang
Mataram, NTB 83125

High Speed Railway Kantor Proyek HSRCC-CM

Jl. Raya Kalimalang Blok M1 Kav. No. 4
Kel. Pondok Kelapa, Kec. Duren Sawit
Jakarta Timur 13450
Phone : (+62) 8131 5075 658

OVERSEAS

Algeria
Cite Les Cators, 3eme Groupe
Villa N 26, Said Hamdne Bir Mourad Rais - Algeria

Dubai
The Onyx Tower I, No. 1108, 11th Floor,
Sheikh Zayed Road, Dubai, Uae

Niger
06 Rue Abderrahmane Laala Etage
1, El Madania, Alger, Algerie

Solomon
Wijaya Karya Solomon Ltd.
Branch of PT Wijaya Karya (Persero) Tbk.
PO Box R75, Honiara, Solomon Islands

Filipina
Unit 18V 18th Floor, Legaspi Towers 300 Roxas Blvd Cor P Ocampo St Brgy 719 Zone 078, Malate, Manila

Malaysia
Wijaya Karya Persero Sdn. Bhd.
(1114450-T) Lot 382, 2nd 4 Floor, Section 5 Wisma Polarwood KTLD
Jl. Satok Kuching

Timor Leste
Zero V, Fatuhada, Dom, Aleixo, Dili

SUBSIDIARIES

WIKA Beton

Head Office

Gedung WIKA Tower 1
Jl. D.I. Panjaitan Kav. 9 Jakarta 13340
Phone: (+6221) 8192 802 (Hunting)
Fax : (+6221) 8590 3872
Website: www.wikabeton.co.id
E-mail : wbcc@wika-beton.co.id
marketing@wika-beton.co.id

Factories

PPB Sumatra Utara

Jl. Binjai Km 15,5 No. 1
Diski, Deli Serdang 20351
Phone: (+6261) 8821 543, 8821 111
Fax : (+6261) 8821 668, 8830 350

PPB Lampung

Jl. Raya Tegineneng Km 34
Desa Bumi Agung, Tegineneng
Pesawaran 39363
Phone: (+62725) 41318
Fax- (462725) 7851 568

PPB Lampung Selatan

Jl. Wijaya Karya Beton
(Jl. Lintas Timur Sumatra Km 4)
Desa Sumur, Ketapang
Lampung Selatan 35596

PPB Bogor

Jl. Raya Narogong Km 26
Cileungsi, Bogor 16820
Phone: (+6221) 8674 010
Fax : (+6221) 8674 018

PPB Karawang

Jl. Surya Madya III Kav. 1-34
Kawasan Industri Surya Cipta
Karawang 41361
Phone: (+6221) 8911 5167
(+62267) 8630 315
Fax : (+62267) 8610 257

PPB Subang

Jl. Raya Cipeundeuy — Pabuaran Km 3,6
Desa Karang Mukti, Kec. Cipeundeuy
Subang 41272

PPB Majalengka

Jl. Raya Barat Burujul Kulon
Jatiwangi, Majalengka 45454
Phone: (+62233) 882 575, 881 425

WIKA Gedung

Head Office

WIKA Tower 1, 7th-10th Floor
Jl D.I. Panjaitan Kav. 7
Jakarta Timur 13340
Phone : [+6221] 8690 9003
(+6221) 8590 8862 (Hunting)
Fax : (+6221) 8590 4146
E-mail : corsec@WiKAgedung.co.id

WIKA Really

Head Office

Tamansari Hive Office, 12th Floor
Jl. Di. Panaitan Kav. 2, Cawang
Jakarta Timur 13340
Phone: (+6221) 2101 1200, 2101 1201
Fax- (+6221) 2208 5123
Website: www.wikarealty.co.id

WIKA Industri & Konstruksi

Head Office

Tamansari Hive Office Lt. 6
Jl D.I. Panjaitan Kav. 2
Cipinang Cempedak, Jakarta
Timur

Factories

Bogor Factory

Kawasan Industri WIKA
Jl. Raya Narogong Km 26
Cileungsi, Kab. Bogor 16820

Tangerang Factory

Jl. Raya Serang Km 27, Desa
Tobat
Balaraja, Tangerang, Banten

Majalengka Factory

Jl. Raya Cirebon, Bandung Km 31
Desa Cisambeng, Kec. Palasah
Kab. Majalengka

WIKA Serang Panimbang

Gerbang Tol Rangkasbitung Km
26+500
Tol Serang Panimbang
Kec. Mekar Agung, Kel. Cibadak
Kab. Lebak, Banten 42318

WIKA Rekayasa Konstruksi

Tamansari Hive Office Lt. 5&11
Jl. D.I. Panjaitan Kav. 2 Cipinang
Cempedak, Jakarta Timur

WIKA Bitumen

Jl. Kartini No. 01
Banabungi, Kab. Buton
Kec. Pasar Wajo, Sulawesi Tenggara

WIKA Tirta Jaya Jatiluhur

Gedung Apartemen Tamansari Iswara
Jl. Cut Mutia No. 2, Kec. Rawalumbu
Kota Bekasi

WIKA Industri Energi

Komplek Industri WIKA
Jl. Raya Narogong No. 26, Gunung Putri
Kab. Bogor 16370

WIKA Industri Manufaktur

Tamansari Hive Office Lt. 6
Jl D.I. Panjaitan No. Kav. 2, RT 7/RW 11
Cipinang Cempedak, Kec. Jatinegara
Jakarta Timur 13340
South Jakarta 12810




PT WIJAYA KARYA (Persero) Tbk



PT WIJAYA KARYA (PERSERO) TBK.

JL. D.I. PANJAITAN KAV. 9-10,
CIPINANG CEMPEDAK,
JATINEGARA, EAST JAKARTA 13340

@PTWijayaKarya 

PT Wijaya Karya 

PT Wijaya Karya 

@PTWIJAYAKARYA 

PTWijaya Karya (Persero) Tbk 