

The background of the entire page is a black and white halftone image of a building's facade. It features a series of tall, rectangular columns and a prominent Garuda emblem (a mythical bird) perched on a ledge. A solid blue rectangular overlay covers the bottom right portion of the image, containing the text.

# CREATING ——— SUSTAINABILITY

Company Profile  
**PT Wijaya Karya (Persero) Tbk**



PLTU PALU 2x50 MW,  
CENTRAL SULAWESI

# TABLE OF CONTENT

**01** History Of WIKA

---

**03** Awards In 2023

---

**07** Message From The President Director

---

**09** Vision, Mission & WIKA's Value

---

**10** Core Values Akhlak

---

**11** House Of Transformation

---

**12** Commissioners Profile

---

**14** Directors Profile

---

**16** Organizational Structure

---

**18** Business Portfolio

---

**19** Business Lines

---

**20** Operation Area

---

**23** Financial Highlights

---

**25** Human Capital

---

**30** WIKA's Portfolio

---

**41** Corporate Social Responsibility

---

**45** Green Initiative

---



History of –

# Wijaya Karya



PT WIJAYA KARYA (PERSERO) TBK, HEREINAFTER REFERRED TO AS WIKA OR THE COMPANY, WAS ESTABLISHED PURSUANT TO LAW NO. 19 OF 1960 IN CONJUNCTION WITH GOVERNMENT REGULATION NO. 64 OF 1961 DATED MARCH 29, 1961, CONCERNING THE ESTABLISHMENT OF THE STATE COMPANY (PERUSAHAAN NEGARA) “WIJAYA KARYA.”

Subsequently, the Company was renamed “PT Wijaya Karya” based on the Deed of Limited Liability Company No. 110 dated December 20, 1972, drawn up before Dian Paramita Tamzil, acting at the time as a substitute for Djojo Muljadi, S.H., Notary in Jakarta, and the Amendment to the Deed of Establishment of the Limited Liability Company “PT Wijaya Karya” based on Deed No. 106, dated April 17, 1973, drawn up before Kartini Muljadi, S.H., Notary in Jakarta.



The Company continues to take various anticipative and innovative measures to help its development, resulting in its strong position amidst national and global crisis.

In 2019, WIKA officially launched its 2030 Vision and Mission to enable the Company in overcoming future challenges as a company engaging in sustainable investment and Engineering, Procurement, and Construction

(EPC) for better quality of life. WIKA believe, its 2030 Vision is an actualization and harmonization of its principles (people, planet, and profit) while still in line with the objective of sustainable development. WIKA is committed to play its vital role in creating a better quality of life.

# AWARDS 2023



## MURI

Pipe Jacking Project with the largest pipe diameter and longest distance between shafts at Ciliwung Sodetan

MURI

January 24, 2023



## Indonesia Construction Safety Awards 2023

1st place in the Emergency Response category by Donggala Pier Reconstruction Project

Perkumpulan Ahli Keselamatan Konstruksi Indonesia (PAKKI)

February 11, 2023



## Indonesia Good Corporate Governance Award-VII-2023

2nd - The Best Indonesia GCG for Public Company 2023

The Indonesia Institute for Corporate Governance (IICG)

February 23, 2023



## PMI appreciation

Appreciation for WIKA for holding the Annual Blood Donation

Palang Merah Indonesia  
Indonesian Red Cross

March 8, 2023



## PUPR appreciation

Kinerja Penyedia Jasa Dalam Mendukung Implementasi Kebijakan Peningkatan Penggunaan Produk Dalam Negeri Bidang Bina Marga Terbaik  
Performance of Service Providers in Supporting the Implementation of the Policy to Increase the Use of the Best Domestic Products in the Highways Sector

Menteri PUPR, Basuki Hadimuljono  
Minister of Public Housing and Affairs, Basuki Hadimuljono

March 11, 2023



## MURI

BUMN Pertama yang Menyusun Kurikulum *Building Information Modeling* (BIM) Bersama Perguruan Tinggi  
First State-Owned Enterprise to Develop Building Information Modeling (BIM) Curriculum with Universities

MURI  
March 11, 2023



### Indonesia CSR Excellence Awards 2023

Best Workplace Environment, Best CSR on UKM Program, Excellence in Green and Environmental Management  
The Best Leadership in Focus on CSR Program

[Indonesia CSR Excellence Award](#)

March 16, 2023



### Patriana Award

Pemenang Terbaik 1 Patriana Award Tahun Provinsi DKI Jakarta Kategori Usaha Skala Besar Sektor Manufaktur, Pertambangan, dan Migas  
1st Best Winner of the Patriana Award for DKI Jakarta Province in the Category of Large Scale Business in Manufacturing, Mining and Oil and Gas Sector

[BPJS Ketenagakerjaan](#)  
BPJS Employment

March 29, 2023



### Top Digital Awards

Top Digital Implementation 2023 #Star 5

[It Works Magazine](#)

April 12, 2023



### Asia Sustainability Reporting Rating 2023

Gold Rank With Reference Category

[National Center for Corporate Reporting \(NCCR\)](#)

July 11, 2023



### AFKN Awards 2023

Majelis Ta'lim Mitra Dakwah Bilhal Membangun Pedalaman & Pengembangan SDM Muslim Nuu Waar

Majelis Ta'lim Mitra Dakwah Bilhal Developing Inland Area & Human Resource of Muslim Nuu Waar

[Al Fatih Kafaah Nusantara](#)

August 17, 2023



### The Asset Manager 2023

Juara 1 Kategori Master  
1st Place in Master Category

[Menteri Keuangan Indonesia, Sri Mulyani Indrawati](#)  
Indonesian Minister of Finance, Sri Mulyani Indrawati

October 18, 2023



### IICD Corporate Governance Award 2023

Best Non Financial Sector dengan kategori Mid Cap  
Best Non Financial Sector in the Mid Cap category

Indonesian Institute for Corporate Directorship

November 3, 2023



### MURI

Pembangunan Stasiun Pompa Banjir dengan Total Kapasitas Terbesar  
Construction of Flood Pump Station with the Largest Total Capacity

MURI

November 12, 2023



### Annual Report Award

Integrated Mindset Toward Sustainability For Long-term Value Creation

ARA

November 27, 2023



### 2022/23 Vision Awards

Annual Report Competition  
Gold Award

LACP

January 19, 2024



### Anugerah CSR IDX Channel 2023 IDX Channel 2023 CSR Award

Program CSR: Program Pengembangan Lingkungan dan Sosial Keberlanjutan Bumdes Desa Tanjung Burung Kec. Teluk Naga  
CSR Program: Environmental and Social Sustainability Development Program for Bumdes, Tanjung Burung Village, Teluk Naga District

IDX

December 13, 2023



### 3rd Indonesia Best 20 Corporate Secretary Awards 2023

3rd Anniversary Indonesia Best 20 Corporate Secretary Awards 2023 in Heavy Construction & Civil Engineering

The Economics

December 15, 2023





**MONEV Keterbukaan Informasi Publik**  
**MONEV Public Information Transparency**

Predikat Badan Publik Informatif  
Informative Public Agency Predicate  
[Komisi Informasi Pusat RI](#)  
Republic of Indonesia Central Information  
Commission

December 19, 2023



**Greenship Awards 2023**

Dedicated Member kepada WIKA dan GBCI  
Lifetime Achievement kepada Hadjar Seti Aji  
selaku Direktur Human Capital Management  
WIKA  
Dedicated Member to WIKA and GBCI Lifetime  
Achievement to Hadjar Seti Aji as WIKA's Director  
of Human Capital Management

[Green Building Council Indonesia](#)

December 19, 2023



**Bisra 2023**

*Gold Champion*  
*In Corporate Social Responsibility Program*  
*Category of Economy Element*

[Bisnis Indonesia](#)

August 15, 2023

# MESSAGE FROM THE PRESIDENT DIRECTOR

## RESPECTED SHAREHOLDERS AND STAKEHOLDERS,

On behalf of the Board of Directors and management of PT WIJAYA KARYA (Persero) Tbk (WIKA), it is my honor to extend our greetings with WIKA's new optimistic spirit.

Sustainable development, which has become global discourse in the last few decades, demands all construction industry players, including WIKA to adapt with the business and environmental atmosphere. Every aspect requires friendlier approaches, from technological, implementation techniques, product, to the end process.

These aspects have become the foundation for WIKA to implement sustainable transformation of its vision-mission. The vision-mission is the mix and match of green construction concept, continuous improvement, and business ethics, aiming to meet the challenges in sustainable development.

WIKA 2030 vision and mission transformation demonstrates that WIKA's objective is not solely to create the best products and/or services. Beyond that, the existence, role, and function of WIKA is aimed to create a more vast benefit, which is to improve the quality of life for everyone for a more united nation.

So, how can WIKA continue to move consistently and continuously? This is an interesting question and a challenge to contemplate. Is it enough to solely rely on the existing organizational strategy and system? Or do we have to rely solely on Human Capital? The answer is quite straightforward, everything has to correlate and collaborate!

The message I wish to convey is that WIKA reflects The Power of Team Strategy. WIKA is not a "super" organization, but WIKA is an expert in building a "super team". It is safe to say that WIKA is truly a solid super team because WIKA is able to create synergy among its people, business pillars, as well as its development strategy and execution.

I am optimistic that WIKA, as a part of Indonesia, has a competitive edge that is on par with other nations in the global competition scene.

We are a nation of extraordinary diversity and local cultural heritage. We are all able, we are all willing, we are all aware that WIKA and Indonesia possess world-class quality. A quality to create a better life for everyone.

Regards,

**Agung Budi Waskito**

President Director  
PT WIJAYA KARYA (Persero) Tbk

**“I AM OPTIMISTIC THAT WIKA, AS A PART OF INDONESIA, HAS A COMPETITIVE EDGE THAT IS ON PAR WITH OTHER NATIONS IN THE GLOBAL COMPETITION SCENE”**



**AGUNG BUDI WASKITO**  
**President Director**  
PT WIJAYA KARYA (Persero) Tbk

# VISION MISSION

“Becoming The Trusted and Sustainable Integrated Infrastructure and EPC Services Company.”

**Vision** - 2030

**Mission** - 2030

- Provide integrated and sustainable EPC services and products based on globally standardized principles of Quality, Safety, Health, and Environment.
- Implement a culture of learning and innovation to provide the best solutions for stakeholders, ensuring a high level of satisfaction.
- Commit to conducting business processes with the highest quality standards and the use of the best technology.
- Strengthen financial resilience and growth by optimizing resource utilization to achieve sustainable profitability.
- Implement environmental management, social responsibility, ethical practices, transparency, accountability, and continuous innovation in all aspects of the company's operations.
- Build human resources with integrity and professionalism based on the company's culture.



# CORE VALUES AKHLAK



AKHLAK core value is implemented by the Ministry BUMN (Indonesian state owned enterprises) in serving the country. AKHLAK itself has stands for Amanah, Kompeten, Harmonis, Loyal, Adaptif, and Kolaboratif. Each value has

its own description for the application of the code of ethics and code of conduct to be applied at the Ministry of BUMN (Indonesian state owned enterprises).

# HOUSE OF TRANSFORMATION

## "Cash focused, lean and fit for future"

Corporate

### CASH FOCUSED

#### Increased cash liquidity and improved corporate health ratios

- Accelerated collection of receivables
- Loan restructuring (MRA) and reduction of SCF balance
- Strengthening the company's capital structure through PMN
- Divestment of subsidiaries and associates



Immediate

### PROJECT EXECUTION EXCELLENCE

#### Strengthen value engineering to optimize planning and as a basis for project control and supervision

- Implementation of winning war room
- SCM performance optimization
- Implementation of zero accident program
- Implementation of lean construction & BIM 5D on all projects
- Transformation of integrated project control system
- Implementation of worker activity monitoring system



Short Term

### PORTFOLIO BALANCING

#### Business synergy and portfolio management optimization Projects and market expansion through partnerships

- Transformation of parent company and subsidiary synergies
- Portfolio balancing in the form of exploring new business models to generate recurring income with minimal capex
- Strengthening potential portfolios (through blue ocean, high-value added, and sustainability strategies)
- Centralization of marketing of WIKA group assets
- Addition of LSP WIKA scheme license



Mid-Long Term

Support Function

### LEAN ORGANIZATION

#### Establishment of a responsive and agile organizational structure

- Organizational structure alignment
- Implementation of WIKA group shared service

- Lean office implementation

### RISK MANAGEMENT

#### Strengthening corporate governance and project risk management

- Integrated governance of parent and subsidiary companies
- Implementation of integrated contract and claims management

- Transformation of JO governance

### IT/DIGITALIZATION

- Improved IT usability on site, off site, and back office
- Digital system alignment backbone and operations

- Digital transformation of business processes: commissioning, correspondence, four-eye principles, asset management, CSI, document filling system

- Transformation of subsidiary IT governance
- SAP integration with BIM, E-SCM, digital invoicing, and vendor management digitalization

- Digitization and integration of personal database between HCMS and CRM for tender process

### HUMAN CAPITAL MANAGEMENT (WIKA PEOPLE WITH AKHLAK CHARACTER)

- Capability improvement (competent, adaptive, collaborative)
- Talent in accordance with business development
- Strengthening company culture (trustworthy, loyal, and harmonious)

- Transformation of knowledge management
- Management Transformation
- Talent competency profile development

- Change leader
- Transformation of systemized development program

## CORE VALUES AKHLAK

# COMMISSIONERS PROFILE



**Jarot Widyoko**  
*President Commissioner*

He earned his Bachelor's degree at Gadjah Mada University majoring in Civil Engineering and Master's degree in Water Resources Development at Bandung Institute of Technology. He currently serves as Director General of Water Resources at the Ministry of PUPR and was once appointed as Director of Rivers and Beaches at the Directorate General of Water Resources at the Ministry of PUPR.



**Suryo Hapsoro Tri Utomo**  
*Independent Commissioner*

He studied Civil Engineering at Gadjah Mada University and earned his PhD at the University of Newcastle, UK. Previously, Suryo was also appointed as Director of Research and Community Service. Currently, he is an educator at the Faculty of Engineering, Universitas Gadjah Mada



**Harris Arthur Hedar**  
*Independent Commissioner*

He completed his Bachelor's and Master's degrees in Law at Narotama University Surabaya and earned his Doctorate in the same major at Jayabaya University. Previously, he was the Expert Staff for Legal Affairs of the Presidential Advisory Council. Currently, he is the Head of Corporate Lawyer of Lion Air Group.



**Adityawarman**

*Independent Commissioner*

He earned a Bachelor's degree in Civil Engineering at Diponegoro University and a Master's degree in Management at Trisakti University. Previously, he was appointed as Commissioner of PT Hutama Karya (Persero) in, President Director of PT Jasa Marga (Persero) Tbk, and Operations Director of PT Jasa Marga (Persero) Tbk.



**Rusmanto**

*Independent Commissioner*

He underwent a number of military education starting from AKABRI Darat, followed by Seskoad, Sesko TNI, and Lemhanas RI, PPSA XVIII. Previously he was appointed as Director of Army Transportation and Expert Staff to the Minister of Defence of the Republic of Indonesia for Social Affairs.



**Firdaus Ali**

*Commissioner*

He pursued his undergraduate education at the Bandung Institute of Technology, majoring in Environmental Engineering. He earned his Master's and Doctoral degrees in Environmental Technology at the University of Wisconsin-Madison, USA. Currently, he serves as Special Staff to the Minister of PUPR for Water Resources, and Researcher at the Faculty of Engineering, University of Indonesia.



# DIRECTORS PROFILE



**Agung Budi Waskito**  
*President Director*

He earned his Master's Degree in Water Resources from the Indian Institute of Technology. Previously he was trusted as Manager of Business Development, Division Manager, GM Marketing, GM General Civil Operations 1 within PT Wijaya Karya and currently serves as President Director of WIKA



**Hananto Aji**  
*Director of Operation 1*

He earned his Bachelor's degree at Sebelas Maret University Surakarta majoring in Civil Engineering. Previously he was trusted as General Manager of Business Synergy and is currently appointed as Director of Operations I WIKA.



**Harum Akhmad Zuhdi**  
*Director of Operation 2*

He earned his Bachelor's degree at the Sepuluh November Institute of Technology majoring in Civil Engineering. Previously, he was trusted as Deputy General Manager and currently he serves as WIKA's Operations Director II.



**Adityo Kusumo**

*Director of Finance*

He earned his Master of Business Administration (MBA) at UCLA Anderson School of Management. Previously, he was trusted as Vice President, Project Leader Mergers & Acquisitions (M&A) at PT Bank Mandiri (Persero) Tbk and currently works as Finance Director of WIKA



**Hadjar Seti Adji**

*Director of Human Capital Management and Transformation*

He earned his Master of Engineering of Science from the University of New South Wales. Previously he served as Director of HR and System Development of PT Waskita Karya (Persero) and currently, he is the Director of Human Resource Management and Transformation at WIKA.

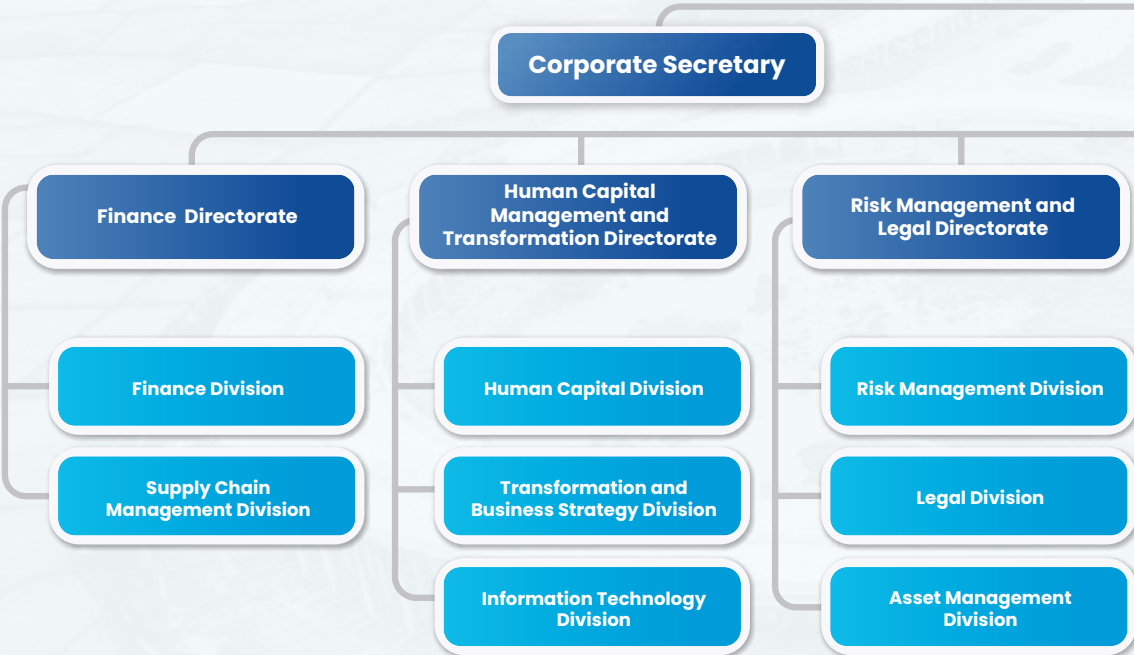


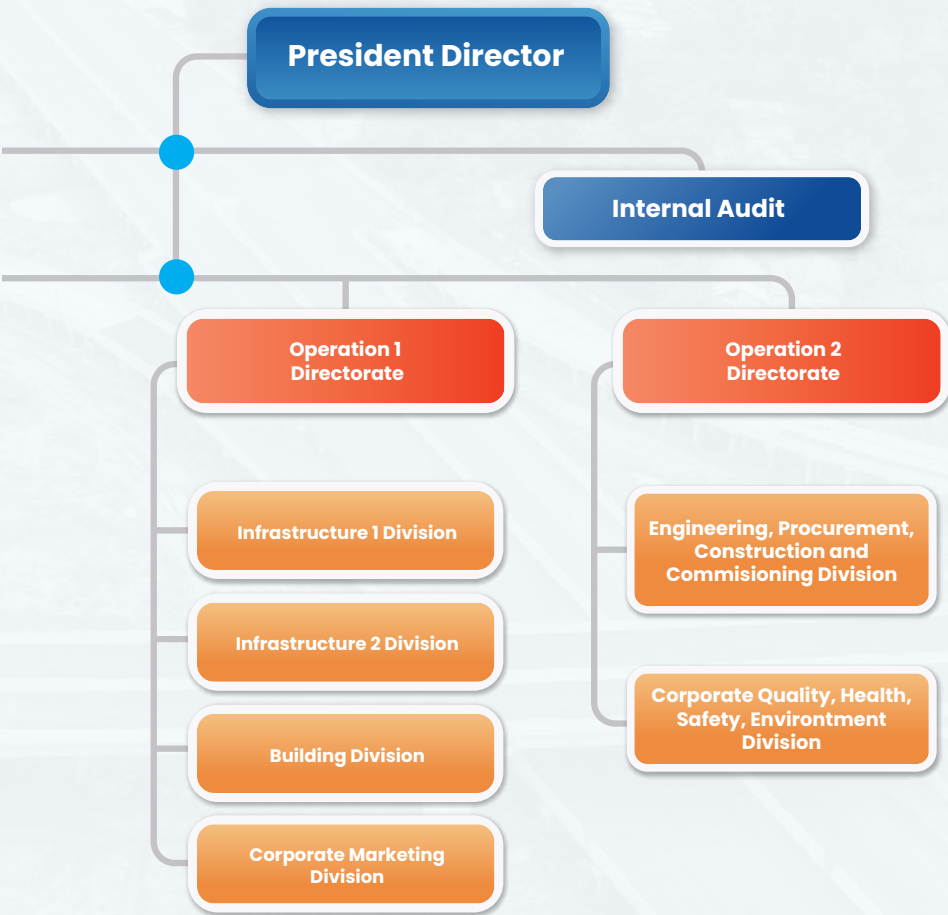
**Sumadi**

*Director of Risk Management and Legal*

He earned his Master's degree in Financial Management from Binus Business School. Previously, he was trusted as General Manager of Accounting & Tax and currently he serves as Director of Risk Management and Legal of WIKA.

# ORGANIZATIONAL STRUCTURE







# BUSINESS PORTFOLIO



Infrastructure Division



Building and Overseas Operation Division



Energy & Industrial Plant Division

<p><b>60%</b></p> <ul style="list-style-type: none"> <li>Precast</li> <li>Ready Mix</li> <li>Concrete</li> <li>Industry trade</li> </ul>	<p><b>69,30%</b></p> <ul style="list-style-type: none"> <li>High Rise Building Construction</li> <li>Property Construction</li> </ul>
Public Company	

<p><b>72,51%</b></p> <ul style="list-style-type: none"> <li>Real Estate and Property</li> <li>Hotel &amp; Resort</li> <li>Property Management</li> </ul>	<p><b>99%</b></p> <ul style="list-style-type: none"> <li>Mining</li> <li>Natural Asphalt</li> </ul>	<p><b>84,17%</b></p> <ul style="list-style-type: none"> <li>Toll Road Authority for Serang-Panimbang</li> </ul>	<p><b>92,30%</b></p> <ul style="list-style-type: none"> <li>Water Treatment Plant</li> </ul>	<p><b>98,57%</b></p> <ul style="list-style-type: none"> <li>Steel Fabrication</li> <li>Aluminum Casting</li> <li>Plastic Injection</li> <li>Electric Vehicle</li> </ul>	<p><b>97,99%</b></p> <ul style="list-style-type: none"> <li>Operating Maintenance Power Plant</li> <li>Machine Instalment</li> <li>Green Energy</li> </ul>
Private Company					

# BUSINESS LINES

WIKA's business activities are focused on optimizing 5 (five) business lines. With product diversification offered by each business line, WIKA excels in being able to seize every opportunity in the market.



## Investment

Energy, Infrastructure & Water

- Toll Road
- Airport
- Water Treatment Plant
- High Speed Railway Jakarta Bandung



## Realty & Property

Real Estate & Hospitality

Real & Property :

- Landed House
- High-Rise Property (Apartemen Condotel)
- Hotel & Resort
- Property Management



## Infrastructure & Building

Civil Construction & High Rise Building

Civil Construction :

- Road and Bridge
- Seaport and Jetty
- Dam and Barrage

Building Construction :

- Residential & Commercial
- Airport
- Railway Depot & Station



## Energy & Industrial Plant

EPCC

EPC :

- Power Plant
- Industrial Plant
- Processing Plant
- Cable Transmission

Operation & Maintenance :

- Power Plant
- Airport
- Green Energy



## Industry

Precast & Ready Mix  
- Construction Industry :

- Steel Fabrication
- Aluminum Casting
- Plastic Injection

- Natural Asphalt
- Electric Vehicle



# OPERATION AREA





**WIKA's Business  
Network and  
Operational Areas  
in 2023**

**Domestic**

- |                        |                        |
|------------------------|------------------------|
| 1. Aceh                | 13. Central Sulawesi   |
| 2. North Sumatra       | 14. Southeast Sulawesi |
| 3. South Sumatra       | 15. Bali               |
| 4. West Sumatra        | 16. Papua              |
| 5. Jambi               | 17. East Java          |
| 6. Riau Islands        | 18. Central Java       |
| 7. Bangka Belitung     | 19. West Java          |
| 8. South Kalimantan    | 20. Banten             |
| 9. East Kalimantan     | 21. DKI Jakarta        |
| 10. Central Kalimantan | 22. East Nusa Tenggara |
| 11. North Sulawesi     | 23. West Nusa Tenggara |
| 12. South Sulawesi     |                        |

**Overseas**

1. Solomon Island



HIGH SPEED RAIL (WHOOSH),  
JAKARTA





# FINANCIAL HIGHLIGHTS

# FINANCIAL HIGHLIGHT

As of 2023

Revenue



Rp **22.530**  
Billion

Total Assets



Rp **65.981**  
Billion

Total Equity



Rp **9.572**  
Billion

Gross Profit



Rp **1.862**  
Billion

New Contract



Obtained New Contract of:

Rp **29.245**  
Billion

Rp29,25 Trillion of decreased by 12.32%

Order Book



Obtained Order Book amounted to

Rp **73.905**  
Billion

or Decreased by 1.70%

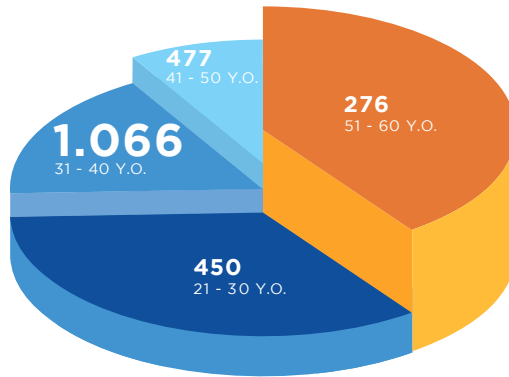
# HUMAN CAPITAL







# HUMAN CAPITAL



**2023 DEMOGRAPHY**  
AGE & NUMBER OF EMPLOYEES

Human Resources is the main capital for WIKA's business sustainability and transformation. Since their first day of employment, WIKA employee is shaped to be an adaptable and persistent individual, who is willing to learn continuously.

Character building is in line with self-competence and leadership development. This combination creates first-class WIKA personnel who can be trusted to fill top positions in WIKA, as well as other SOEs.

## WIKAPRATAMA

WIKAPRATAMA Learning Center is a competency development facility for WIKA personnel (Pusat Pengembangan Kualitas Insani WIKA/PPKIW). Various training programs are organized to prepare the young generation of WIKA to take structural and functional positions



WIKAPRATAMA Learning Center, EAST JAKARTA



## WIKASATRIAN

Our observation shows that existing leadership practices have not fully answered the fundamental problems in this country. Through our extensive research, we found a leadership model a Nusantara heritage that is the identity of this nation: WIKASATRIAN.

Based on local cultural heritage, which are spirituality/belief in the Almighty God, humanity, and nature, WIKASATRIAN learning program is designed to create more effective leaders who contribute and explore noble values, which are proven in the legacy they leave behind, and therefore, WIKASATRIAN can serve as a guideline for Indonesian leadership model.

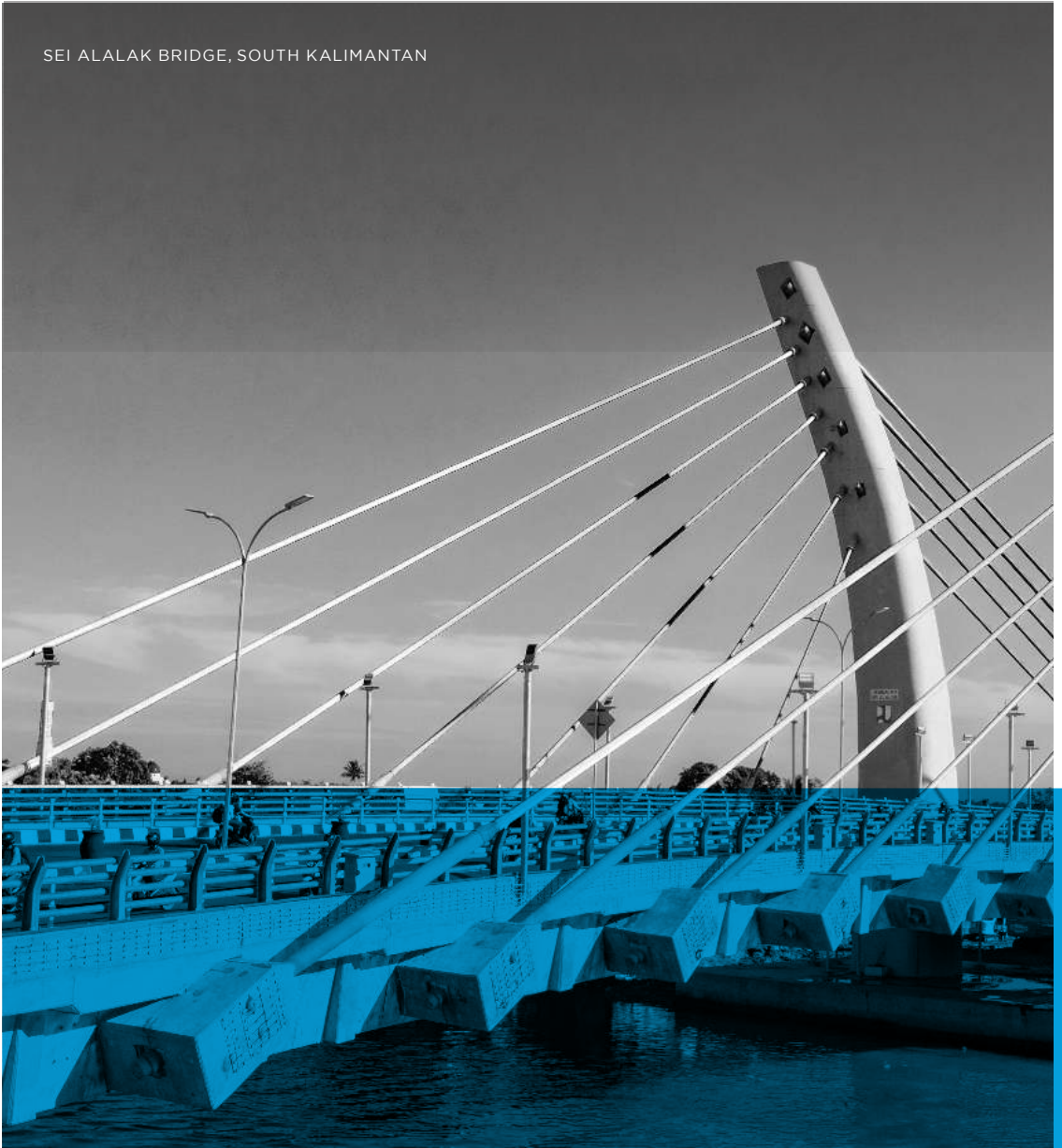
WIKASATRIAN leadership modules focus on personal mastery, which is divided into three levels (Satria Pratama, Satria Utama, and Satria Luhur), as well as business mastery through a series of learning activities that create added values for the Company.

As WIKA leadership center, WIKASATRIAN is hoped to generate more benefits for public in general, and be the starting point for the rise of Nusantara leadership concept.



WIKASATRIAN, MEGAMENDUNG WEST JAVA

SEI ALALAK BRIDGE, SOUTH KALIMANTAN



# WIKA'S PORTFOLIO







SERANG-PANIMBANG TOLL ROAD, BANTEN



BALIKPAPAN - SAMARINDA TOLL ROAD, EAST KALIMANTAN



# INVESTMENT

## LEADING THE TRANSFORMATION OF THE CONSTRUCTION INDUSTRY THROUGH SUBSTANTIAL INVESTMENT IN STRATEGIC SECTORS

---

Supported by strength of synergy in the construction and industry sectors, the Investment business line is a promising flow of income to support WIKA's growth. Investment is also becoming the direction of the Company's business transformation in the future.

As an investor, WIKA plays a direct role in providing capital for projects with direct impact to economic growth, from absorbing workforce for construction to even more benefits after operations. WIKA's portfolio in the investment business line currently includes; toll roads, airports, water treatment, high-speed railways, notably the prestigious Jakarta-Bandung high-speed railway project."

---



TAMANSARI JIVVA, BALI



MERUSAKA HOTEL, BALI





# REALTY & PROPERTY

**WITH YEARS OF EXPERIENCE, WIKA PERFECTED THE ART OF CREATING PROPERTIES THAT INSPIRE. EVERY PROJECT IS A TESTAMENT TO WIKA'S DEDICATION TO QUALITY AND CUSTOMER SATISFACTION**

---

Representing WIKA's dream to offer ideal property for various market segments, the Realty and Property business line is a mainstay in welcoming this vast potential in developing new cities and supporting the Government's programs to meet residential needs of the public.

The Tamansari brand by WIKA is now widely known for its property products in the form of landed houses and high-rise buildings in major cities in Indonesia.

---

# INFRASTRUCTURE & BUILDING

**WIKA'S MAIN BUSINESS LINE THAT SUPPORTS NATIONAL STRATEGIC PROJECTS (PSN) AND THE DEVELOPMENT OF THE NEW CAPITAL CITY (IBU KOTA NUSANTARA)**

---

Always in the frontline in presenting higher quality of life, WIKA's Infrastructure & Building business line has been the Company's main strength for more than 6 (six) decades. WIKA is trusted to manage various strategic projects in the country, including 37 reservoirs that are built to create food sustainability, as well as 589 kilometers of toll roads, 14 airports, and 32 ports and harbors to support the improvement of connectivity.

Aside from opening access from villages to cities with the construction of Trans-Papua, WIKA also participates in transforming the face of Indonesia's transport by becoming the pioneer in constructing the railroad infrastructure, comprising of the Mass Rapid Transit (MRT), Light Rail Transit (LRT), High Speed Railway (HSR), and Automated People Mover System (APMS).

---





KRETEK 2 BRIDGE, YOGYAKARTA



PRESIDENTIAL PLACE, IBU KOTA NUSANTARA



SOLAR POWER PLANT ITERA, BANDAR LAMPUNG



MATINDOK GAS PRODUCTION FACILITY DEVELOPMENT, CENTRAL SULAWESI



# ENERGY & INDUSTRIAL PLANT

**ADVANCING THE ENERGY AND INDUSTRIAL PLANT BUSINESS LINE FOR A STRATEGIC MOVE TOWARD FUTURE GROWTH**

---

WIKA's strategic step in showcasing its capacity as a leading Engineering, Procurement, Construction, and Commissioning (EPCC) company is manifested with the development of the Energy & Industrial Plant business line.

In addition to the 14,750MW-capacity power plant, WIKA's creations in this business line include several projects in the energy, mining, oil and gas sector, as well food processing plant that focuses on meeting the basic needs of the people of Indonesia.

---





# INDUSTRY

## WIKA'S STRATEGIC SUPPORTING BUSINESS FOR CONSTRUCTION ACHIEVEMENTS

---

As one of WIKA's key to success, the industry business line is operated by its subsidiaries by offering product diversification and integrating it with project requirements of WIKA or other contractors. Product superiority and efficiency in time, cost, and quality generated by this business line creates an added value for WIKA, and helps it gain trust from all parties.

The Industry business line's mainstay products include precast concrete by WIKA Beton with installed capacity of 4.05 million tons per year; and steel fabrication, aluminum casting and plastic injection from WIKA Industry & Construction with the production capacity of 137,500 tons per year; as well as exploration and processing of natural asphalt of WIKA Bitumen with the production capacity of 350,000 tons per year.

---





STEEL UNIBRIDGE



TUNNEL

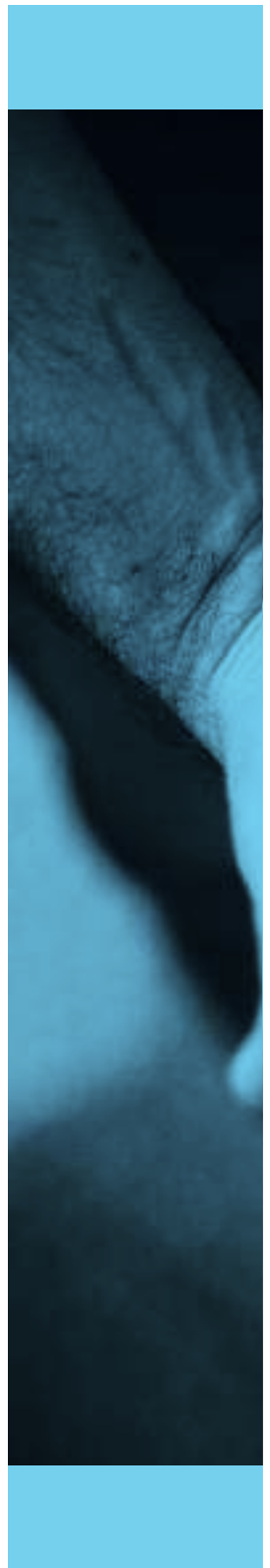


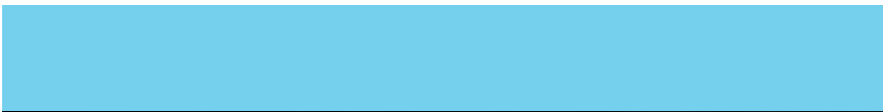
BOX GIRDER, A. P. PETTARANI

BOX GIRDER



# CORPORATE SOCIAL RESPONSIBILITY





# CORPORATE SOCIAL RESPONSIBILITY

**WIKA CONTINUES TO INNOVATE AND PRIORITIZE QUALITY IN EVERY PRODUCT AND SERVICE, REINFORCING ITS ROLE AS THE LARGEST EPC AND INVESTMENT COMPANY IN INDONESIA."**

As the largest EPC and investment company in Indonesia, WIKA continuously offers the best quality of its products and services.

To maintain synergy of human capital, nature, and community that supports the Company's sustainability, WIKA directly takes on the responsibility to create better quality of life by contributing through infrastructure development, investment, and EPC all over Indonesia.

The Company also continues to improve its capabilities by basing its operations on the principles of Prosperity, People, Planet, Peace, and Partnership (5P), while maintaining the commitment to prioritize quality, responsibility, and sustainability.

To achieve this, WIKA actualizes it with the following 4 (four) CSR activities: WIKA Sehat, WIKA Hijau, WIKA Peduli, and WIKA Pintar that are continually developed to bring great benefit for the general public.

## WIKA SEHAT

In accordance with the triple bottom line principles (People, Planet, and Profit) WIKA sincerely, properly, and fittingly exercises the Company's values to optimize local noble values and qualities to extend its reach and compete globally.



## WIKA HIJAU

As a dynamic, moving, swift, and dependable Company, WIKA is committed to life and sustainable environment preservation.

**WIKA BELIEVES THAT TO CREATE BETTER QUALITY OF LIFE, SUPPORT IS NEEDED NOT ONLY ECONOMICALLY, BUT ALSO IN GOOD COOPERATION, PEACE, QUALITY COMMUNITY, AND WELL-PRESERVED ENVIRONMENT**

## **WIKA PEDULI**

With a noble determination, optimism, and resilience while adhering to its principles, WIKA endeavors to maintain harmony, both among WIKA personnel, as well as between WIKA and community, environment, shareholders, and stakeholders.



## **WIKA PINTAR**

Our business is not only profit-oriented, but with our Corporate Social Responsibility, we participate in the development of the Company's social environment. Therefore, the focus of WIKA's sustainable CSR is always optimizing innovation and breakthrough as part of its core business.

# GREEN INITIATIVE

SCORE  
**92,35**  
(of 100)

**Very Good**

*Asean Corporate  
Governance  
Scorecard 2023  
(ACGS)*

SCORE  
**28,2**  
(0-40+)

**Medium Risk**  
*Sustainalytics  
(ESG Risk Rating)*



# COMPANY'S ADDRESS

## HEAD OFFICE

**PT WIJAYA KARYA (Persero) Tbk.**

Jl. D.I. Panjaitan Kav. 9-10  
WIKA Tower 1&2, Jakarta 13340  
Phone : (+6221) 8067 9200, Fax: (+6221) 2289 3830  
Website : [www.wika.co.id](http://www.wika.co.id)  
E-mail : [adwijaya@wika.co.id](mailto:adwijaya@wika.co.id), [humas@wika.co.id](mailto:humas@wika.co.id)

## TRAINING CENTER

**WIKASATRIAN**  
Desa Pasir Angin, Kecamatan  
Megamendung, Kabupaten Bogor  
Phone : (+62251) 825 7600

**WIKAPRATAMA**  
Jl. Kelapa Dua Wetan No. 6,  
Ciracas, East Jakarta  
Phone : (+6221) 364 78750

## REPRESENTATIVE OFFICE

**Uni Arab Emirates  
Representative Office**  
1108, The Onyx Tower-1 Sheikh Zayed  
Road, The Greens, Dubai,  
United Arab Emirates

**Malaysia Representative Office**  
Lot 382, 2nd Floor, Section 5, Wisma  
Polarwood KTLD, Jalan Satok Kuching,  
Sarawak Malaysia 93400

**Philippines Representative Office**  
U-18V Legaspi Tower 300 Roxas  
Blvd. Cor.P.Ocampo, Malate Manila,  
Metro Manila

**Timor Leste Representative Office**  
Luromata, Zero V, Fatuhada,  
Dom Alexio - Dili

## SUBSIDIARIES

### PT WIJAYA KARYA BETON Tbk.

#### HEAD OFFICE

WIKA Tower 1, 2nd, 3rd, 4th floor  
Jl. D.I. Panjaitan Kav. 9, Jakarta 13340  
Phone : (+6221) 819 2802 (hunting)  
Fax : (+6221) 8590 3872  
E-mail : wbcc@wika-beton.co.id  
marketing@wika-beton.co.id  
Website : www.wikabeton.co.id

### BETON PRODUCT FACTORY (PPB)

#### North Sumatera

Jl. Binjai Km. 15,5 No. 1  
Diski, Deli Serdang 20351  
Phone : (+6261) 8821543; 8821111  
Fax : (+6261) 8821668; 8830350

#### Lampung

Jl. Raya Tegineneng Km. 34, 5  
Desa Bumi Agung, Tegineneng,  
Pesawaran 35363  
Phone : (+62725) 41318  
Fax : (+62725) 7851568

#### South Lampung

Jl. Wijaya Karya Beton  
(Jl. Lintas Timur Sumatera Km. 4)  
Desa Sumur, Ketapang, South Lampung  
35596

#### Bogor

Jl. Raya Narogong Km. 26  
Cileungsi, Bogor 16820  
Phone : (+6221) 8674010  
Fax : (+6221) 8674018

#### Karawang

Jl. Surya Madya III Kav. I-34 Kawasan  
Industri Surya Cipta Karawang 41361  
Phone : (+6221) 89115167, (0267)  
8630315, Fax : (+62267) 8610259

#### Subang

Jl. Raya Cipeundeuy – Babuaran  
KM 3,6 Desa Karang Mukti,  
Kec. Cipeundeuy Subang 41272  
Phone : (+62260) 7615584

#### Majalengka

Jl. Raya Barat Burujul Kulon, Tromol  
Pos 2 Jatiwangi, Majalengka 45454  
Phone : (+62233) 882575, 881425

#### Bojolali

Jl. Raya Bojolali-Solo Km. 4,5  
Mojosongo, Bojolali 57300  
Phone : (+62276) 321138  
Fax : (+62276) 322136

#### Pasuruan

Jl. Raya Kajapanan No. 323 Gempol,  
Pasuruan 67155  
Phone : (+62343) 851488, 853161,  
852130  
Fax : (+62343) 851480

#### South Sulawesi

Jl. Kima Raya II Kav. S/4-5-6  
Kawasan Industri Makassar  
Makassar 90241  
Phone : (+62411) 511764  
Fax : (+62411) 510893, 4732306

### PT WIJAYA KARYA GEDUNG Tbk.

#### HEAD OFFICE

WIKA Tower 1  
Jl. D.I. Panjaitan Kav. 9 lantai 8-10,  
Jakarta 13340

### PT WIJAYA KARYA REALTY

#### HEAD OFFICE

Tamansari Hive Office, Lantai 12  
Jl. D.I. Panjaitan Kav. 2, Cawang,  
East Jakarta 13340  
Phone : (+6221) 21011200 / 21011201  
Fax : (+6221) 22085123  
Website : www.wikarealty.co.id

### PT WIJAYA KARYA INDUSTRI & KONSTRUKSI HEAD OFFICE

Tamansari Hive Office,  
Jl. D.I. Panjaitan Kav. 2, Cawang,  
East Jakarta 13340  
Phone : (+6221) 21013772 / 21013545  
Fax : (+6221) 22807137  
E-mail : info@wikaikon.co.id

#### FACTORIES

Plastic, Pressing & Casting Factory(PPC)  
Jl.Raya Narogong KM 26th  
Cileungsi, Kab. Bogor 16820

Steel Fabrication Factory, Tangerang  
Jl. Raya Serang KM. 27th, Desa Tobat,  
Balaraja, Tangerang, Banten

Steel Fabrication Factory, Majalengka  
Jl. Raya Cirebon - Bandung KM 31st,  
Desa Cisambeng, Kec. Palasah,  
Kab. Majalengka

Workshop & Heavy Equipment Pool  
Jl. Raya Cirebon - Bandung KM 31st,  
Desa Cisambeng, Kec. Palasah,  
Kab. Majalengka

### PT WIJAYA KARYA REKAYASA KONSTRUKSI HEAD OFFICE

Tamansari Hive Office, 5th Floor  
Jl. D.I. Panjaitan Kav. 2, Jakarta 13340  
Phone : (+6221) 88624446

### PT WIJAYA KARYA BITUMEN HEAD OFFICE

WIKA Tower 1, 6th Floor  
Jl. D.I. Panjaitan Kav. 9, Cawang,  
East Jakarta 13340  
Phone : (+6221) 8590 9416  
(+6221) 2101 3928  
E-mail: info@wikabitumen.co.id

#### BUTON OFFICE

Banabungi, Pasar Wajo &  
Jl. Kartini No. 01, Bau Bau Island,  
South East Sulawesi

#### MINI EXTRACTION PLANT

Desa Mantowu, Kecamatan Pasarwajo,  
Kabupaten Buton, South East Sulawesi

### PT WIJAYA KARYA SERANG

#### PANIMBANG HEAD OFFICE

Tamansari Hive Office, 3rd Floor  
Jl. D.I. Panjaitan Kav. 2, Jakarta 13340  
Phone : (+6221) 88201700

## ASSOCIATED ENTITIES

### PT WIJAYA KARYA INDUSTRI ENERGI

#### HEAD OFFICE

WIKA TOWER 1, 7th Floor,  
Jl. D.I. Panjaitan Kav. 9-10,  
Jakarta 13340

#### FACTORY

WIKA Industrial Area  
Jl. Raya Narogong Km 26th  
Cileungsi, Bogor 16820  
Phone : (+6221) 86863293  
Fax : (+6221) 86863294

### PT WIJAYA KARYA INDUSTRI MANUFAKTUR HEAD OFFICE

Tamansari Hive Office, 6th Floor  
Jl. D.I. Panjaitan Kav. 2  
East Jakarta 13340  
Phone : (+6221) 22895735

#### FACTORY

WIKA Industrial Area  
Jl. Raya Narogong Km 26  
Cileungsi – Bogor 16820  
Phone : (+6221) 86863102

### PT CITRA LAUTAN TEDUH

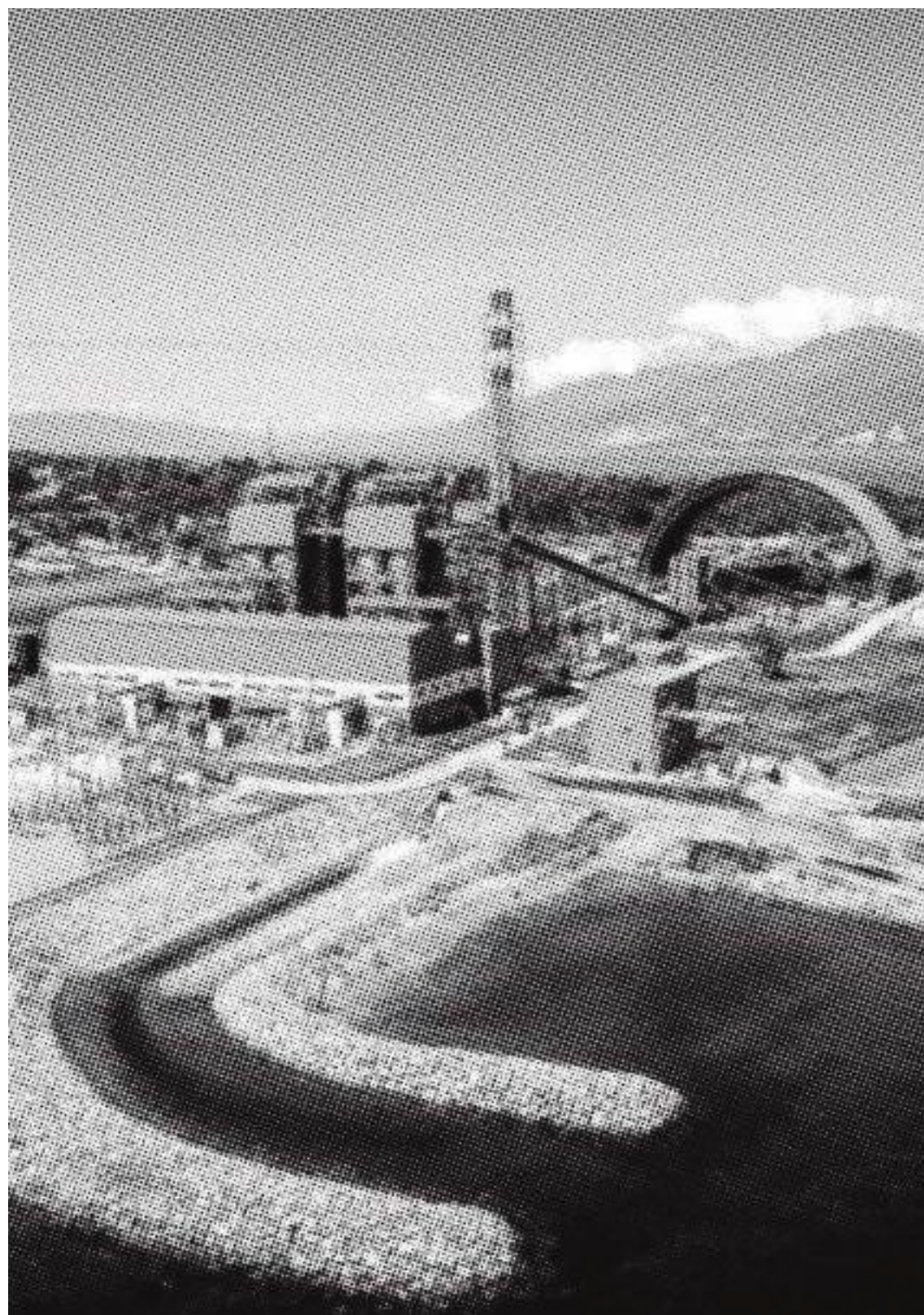
Jl. Hang Jebat Km 1st, Batu Besar,  
Kota Batam 29432  
Phone : (+62778) 761185, 761186  
Fax : (+62778) 761184

### PT PILAR SINERGI

#### BUMN INDONESIA

Mugi Griya Building 3rd Floor Suite  
Jl. MT. Haryono Kav. 10 Tebet,  
South Jakarta 12810







CREATING  
**SUSTAINABILITY**



---

Company Profile  
**PT Wijaya Karya (Persero) Tbk**